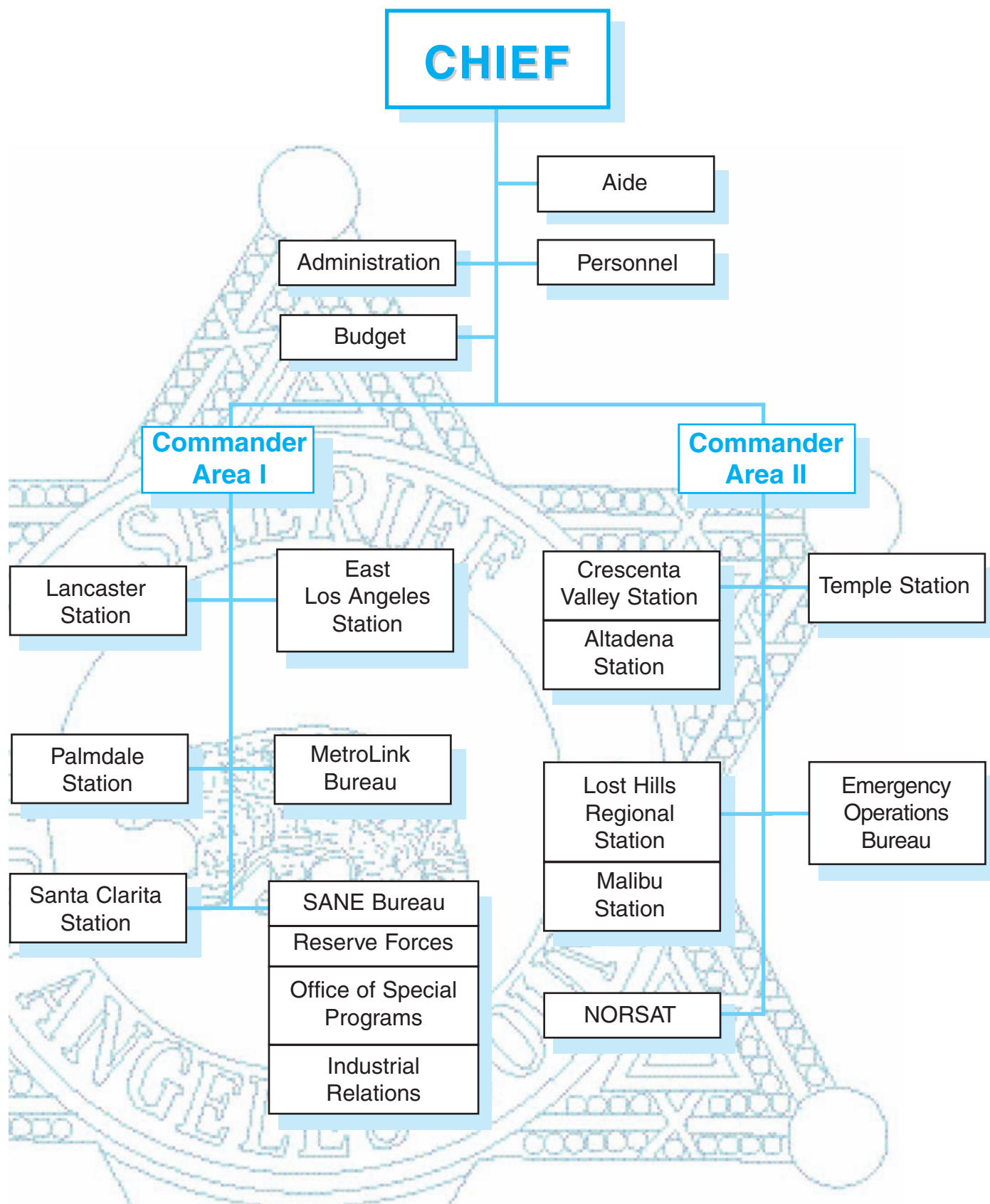




FIELD OPERATIONS REGION I

YEAR IN REVIEW • 1998

FIELD OPERATIONS REGION I



FIELD OPERATIONS REGION I

Units within Field Operations Region I are primarily responsible for providing basic police services to the contract cities and unincorporated county areas which fall within the geographical boundaries of this division. The region is comprised of the following Sheriff's stations and specialized units: Crescenta Valley/Altadena, East Los Angeles, Lancaster, Malibu/Lost Hills, Palmdale, Santa Clarita Valley, and Temple Stations; Emergency Operations Bureau, Northern Regional Surveillance and Apprehension Team, Metrolink Bureau, Substance Abuse Narcotics Education Bureau, Reserve Forces and the Office of Special Programs.

CRESCENTA VALLEY REGIONAL STATION

Crescenta Valley Regional Station and Altadena Local Station, nestled in the foothills of the majestic San Gabriel Mountains, provide police services for the unincorporated communities of La Crescenta, Montrose, Altadena, the City of La Canada/Flintridge, and an estimated 250 square miles of Angeles National Forest. This year, the station made great inroads in recouping some of the monies spent on the search and rescue of intentionally reckless people.



*Captain Patrick G. Leonard
Crescenta Valley
Regional Station*

Early in 1998, there were two snow-boarders who spent their time skiing, out-of-bounds, in the Angeles National Forest. They got lost during a severe snow storm, and the Montrose Search and Rescue team was activated. Additional personnel were needed and, ultimately, a 10 hour search was required which uti-

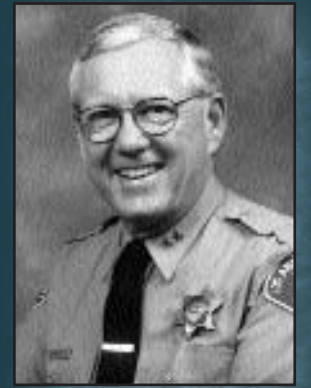
lized 60 LASD sworn, two LASD helicopters and 15 civilian ski patrollers. The snow-boarders were located and airlifted out. During the subsequent investigation, it was discovered that the snow boarders intentionally broke the law (602q P.C., Skiing in a closed area). They were the first snow-boarders in the country to be prosecuted on the misdemeanor section, and the jury trial captured international media attention. The snow-boarders were found guilty and ordered to pay \$7,000 in actual restitution costs directly to the Sheriff's Department/Montrose Search and Rescue Team, thus setting a case precedence. As a result, numerous Law Enforcement agencies in California have begun prosecuting offenders, and seeking restitution for rescues caused by reckless and intentional acts.

Crime Impact Team

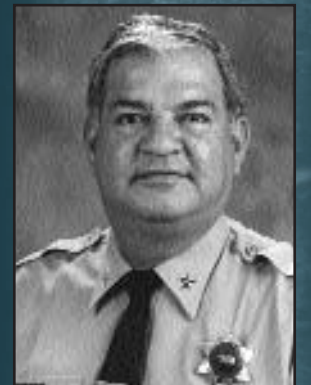
The Altadena Crime Impact Team, commonly known as the "CIT" team, consists of four uniformed detectives working as a Special Problems Detail. The members of the detail consist of deputies who are knowledgeable in street gangs and surveillance. The primary goal of the detail is to target problem street gang members. This detail, working with the COPS team, eliminated a local street gang. The gang, Altadena Block Crips, had maintained a 20-year presence in Altadena.

Crime Prevention Unit

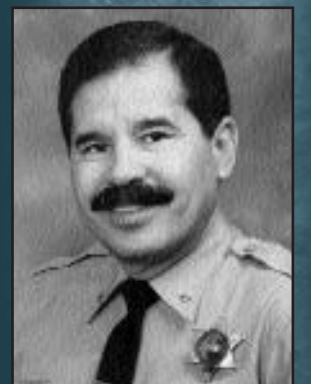
The Altadena Station Crime Prevention Unit and the Pasadena Police Department founded and collaborated on the Junior Law Enforcement Seminar. The Seminar is a three-day summer program for high school students, ages 14 to 18 years old, who have an interest in a career in Law Enforcement. During the Seminar, the students visit the Altadena Sheriff's Station, the Sheriff's Training Academy, the Sheriff's Headquarters and the Pasadena Police Department. In addition, the students participate in a field trip to the Simon



*Chief William T. Sams (Acting)
Field Operations Region I*



*Commander Luis M. Najera
Area I*



*Commander Michael Aranda
(Acting)
Area II*

Wiesenthal Museum of Tolerance. The Seminar culminates in a luncheon at the Brookside Country Club, where the participants are given a certificate for participating in the seminar. The participant's parents are invited to the luncheon, which has become a very popular portion of the program.

Roving Readers

In an attempt to address a community issue, the Reading and Tutoring Program was started by the Altadena Crime Prevention Unit. Station Volunteers tutor children in reading and math. The volunteers who participate in this program are trained by the Pasadena Unified School District in the "Roving Readers" tutorial program. There are eight volunteers who regularly participate in this program.

Sheriff's Reserve Search and Rescue Teams

Crescenta Valley Regional Station and Altadena Local Station are known for the quality of their Sheriff's Reserve Search and Rescue teams. This year, the Altadena team had five members graduate from the Reserve Academy. They also recruited an additional five members who will attend the Reserve Academy in the near future. There were 91 call outs for the Crescenta Valley team, and 27 call outs for the Altadena team.

The Explorer Post had another active year. They participated in numerous events and activities. The unit performed in an outstanding manner in the annual explorer "code-3" competition, placing third overall in a field of more than thirty other Explorer Posts.

Youth Activity League

The Altadena Station Youth Activities League is a new program, operating out of the Altadena Crime Prevention office. The League, in conjunction with Los Angeles County Parks and Recreation, the Pasadena Unified School District, the Pasadena-based "Day One," Foothill Family Services, the Mt. Wilson Vista Girl Scout Council, and the Altade-

na Rotary Club organize field trips and other activities for the youth who live in the Altadena area.

Volunteer Programs

The community-based programs at both Crescenta Valley Regional Station and Altadena Local Station provide invaluable support to the station. These programs include Volunteer Cyclists on Patrol, Volunteers on Patrol, Neighborhood Watch, Business Watch, and Arson Watch. Volunteers alone donated more than 20,000 hours staging such events as Open House, The Haunted Jail, Kid Print, and others that help make the station an integral part of the community.

As the Korean population in the station area gradually increases, Crescenta Valley Regional Station has attempted to develop programs that fit their needs. Some of those programs include obtaining a specialized Korean speaking volunteer for Business Watch, a Korean interpreter program, Korean Crisis Intervention, and a volunteer whose duties are to keep station personnel "up to-date" on news events that affect this segment of the population.

The Federal Crime Bill-funded COPS Team, consisting of six deputies and one sergeant, is assigned to "High Impact Policing" in Altadena areas. The program has been an enormous success in improving quality-of-life issues in the targeted area. Working in partnership with the station's Crime Impact Team, the deputies have eliminated a significant amount of street gang activity in Altadena. Gang graffiti which has been painted over in traditional gang areas has not returned since the COPS team began a graffiti elimination program.

EAST LOS ANGELES STATION

East Los Angeles Station, located just east of downtown Los Angeles, provides police services for the unincorporated County area and for the

contract cities of Commerce and Cudahy. East Los Angeles is a densely populated and proud community with strong cultural traditions.

In the past year, East Los Angeles Station undertook new and exciting projects designed to increase the Department's visibility, and to extend the Department's relationship with the community. Among the newly implemented projects:

Community Academy

East Los Angeles Station operated two Community Academies which successfully graduated more than 60 local citizens. Each class was given an overview of the Sheriff's Department, as well as specific programs provided by the East Los Angeles Station.

Community-Based Organizations

East Los Angeles Station personnel are also active in working with Community-based Organizations. For example, during the Christmas season, sworn and civilian personnel volunteered to assist the East Los Angeles Chapter of the Latino Peace Officer's Association in distributing gifts to more than 4,000 children from the community. On a year-round basis, East Los Angeles Station personnel volunteered their own time to participate in a child's reading program at Belvedere Children's Center, a community-based organization.

Community-Oriented Programs

East Los Angeles Station operates several community based programs including Deputy Bicycle Patrols in the unincorporated County area and in the contract cities of Cudahy and Commerce. East Los Angeles Station also coordinates an annual Christmas Food and Toy Drive, a Station Open House and, in conjunction with the City of Commerce, a Halloween Haunted House program for children. Annually, Station personnel, both sworn and civilian, collect food, toys and holiday fare from local businesses and schools for distribution to needy families within the East Los Angeles community.

Station Crime Prevention personnel are also involved in community cleanup activities in conjunction with the Los Angeles County Department of Planning, Code Enforcement and Supervisor Gloria Molina's office.

COPS Programs

East Los Angeles Station is currently beginning operation of the seventh phase of the federally-funded COPS program. The program has severely reduced crime in six target areas, including the three areas targeted during 1998. The program has also increased our ability to communicate with the citizens we serve, and allowed us to foster a solid relationship with them.

Crime Free Multi-Housing Program

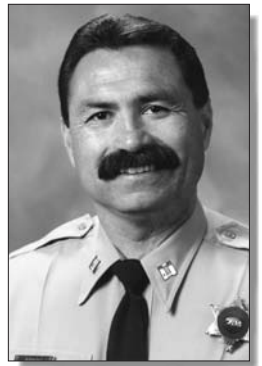
This program, which has been implemented in the Contract City of Commerce, is a crime prevention program that challenges property owners, managers and tenants to work together with law enforcement to reduce or eliminate criminal activity on their property, and in the community. The program consists of a series of informative lectures by law enforcement and fire safety specialists on measures that may be implemented to reduce criminal activity and fire liability at residences, apartment buildings and commercial buildings.

Explorer Program

East Los Angeles Station's cadre of Explorer Scouts has increased during 1998. Several recruitment drives were held at local high schools, which resulted in many new Explorer Scouts completing Academy training and accepting assignment at East Los Angeles.

Leadership Development

East Los Angeles Station continues to provide both civilian and sworn personnel with opportunities for growth and development within the organization. Members are permitted to attend various training programs, including the Sergeant's Leadership Institute, as well as other training offered by outside



*Captain Johnny Jurado
East Los Angeles Station*

vendors. The philosophy at East Los Angeles Station is to develop Training Officers and Detective personnel through exposure to new challenges and environments. This is further amplified by exposing supervisors to a myriad of administrative duties.

“Safehouse Project”

East Los Angeles Station has continued the Safehouse Project. Initiated in cooperation with the Los Angeles Unified School District, the Safehouse Project is designed to provide a safe shelter for school children en route to and from school. The program identifies volunteers from the community who are available, during morning and afternoon hours, to provide a “safehouse” to children in the event of an emergency. The volunteers are given a placard identifying the residence as a safe haven for children. Prior to being identified as a “safehouse” a background check is conducted by East Los Angeles Station Crime Prevention personnel to prevent any undesirable parties from becoming volunteers in the program.

“VIDA”

Vital Intervention Directional Alternatives

The Los Angeles County Sheriff’s Department “VIDA” Program is an intervention/community service program designed to interact with “At-Risk” youths, affect behavioral changes, and impose consequences on first-time offenders.

“VIDA” is specifically designed to deal with the “At-Risk” youth, and the program utilizes pro-active, innovative techniques for positive redirection. Overseen by law enforcement personnel, the program offers treatment, prevention and punitive components to alter negative behavior. The most typical scenario would involve referrals to law enforcement agencies by the courts, or by a parent who petitions the court to request that their children be admitted to the program.

There are six basic components to the “VIDA” program. Each is designed and structured to identify the negative forces that have resulted in an individual’s referral to the program.

In turn, the program is designed to redirect all the negative forces into a positive force that builds self-esteem, encourages goal setting, and leads to a brake in the cycle of antisocial behavior.

Once the intake has been completed, the minor is directed to any or all of the available program components: anger management, family counseling, mentoring, educational assistance, physical fitness, military-type training activities, scared straight, tattoo removal, and community services such as graffiti removal and weed and trash abatement.

Volunteer Program

East Los Angeles Station continues to increase its volunteer cadre. Ongoing recruitment efforts at East Los Angeles Community College have resulted in new volunteers working at the Station. These new volunteers provide assistance with clerical and other administrative duties.

East Los Angeles Station has also implemented a Volunteers on Patrol Program that will augment the law enforcement efforts and citizen involvement in the unincorporated community of East Los Angeles.

Youth Activities League

East Los Angeles Station participates in a Youth Activities League. The League provides afternoon educational and sports programs to area youth as an alternative to a life of gangs or drugs. Each year, the Youth Activities League hosts a Christmas party, during which more than 300 local children are given gifts and entertained by volunteers, dressed as clowns, and an off duty Deputy, dressed as Santa Claus. The Youth Activities League also hosts a sports award night, during which all participants in local sports programs

are recognized for their efforts and participation. Specific awards for excellence are given to those children who put forth extra effort in the area of sports and grades.

The Youth Activities League also sponsored the “Comedy Night” fund raisers which raised thousands of dollars for the youth programs.

EMERGENCY OPERATIONS BUREAU

The Emergency Operations Bureau (EOB) is the Department’s primary resource for coordinating the response to complex emergencies and disasters. This mission includes all phases of preparedness, and encompasses maintaining the County Emergency Operations Center and the Department Operations Center, training members of the Department to support the Sheriff’s role as Director of Emergency Operations, developing and refining emergency operating procedures (EOP’s) and preparing operations plans. EOB’s efforts address the entire range of contingencies from weather emergencies such as El Niño, to wild land fires, to intentional disasters such as nuclear, biological or chemical (NBC) terrorism.

To fulfill these diverse, yet inter-related missions, EOB staff performs contingency planning functions, and participates in the development and instruction of specialized training programs and exercises. During 1998, the revised Operational Area Emergency Response Plan was finalized and published. Additional planning activities for 1998 included revision and updating of Departmental EOP’s and joint efforts with the County Office of Emergency Management to address weather related emergencies originating from the El Niño phenomenon. During 1998, EOB expanded its traditional role of inspecting the emergency preparedness capabilities at field operations stations to add inspection of custody facilities.

A series of emergency response tabletop exercises was also added into the traditional station inspections to enhance response capabilities.

Training provided in 1998 included the Platoon Commanders course, instruction at numerous Field Operations Sergeant and Lieutenant courses, provision of civil disorder training to law enforcement agencies in Law Enforcement Mutual Aid Areas C & G, tabletop exercises on fire and flood scenarios for Area Command Team members, instruction in the Standardized Emergency Management System (SEMS), and instruction in the use of the Emergency Management Information System (EMIS). In August, EOB also participated in the County-wide disaster exercise, simulating a major earthquake. In October, EOB participated in the joint City and County of Los Angeles Lake Arrowhead Emergency Management Workshop, which utilized a chemical and biological terrorism tabletop exercise.

Major responses and special events during 1998 included the annual Tournament of Roses Parade in Pasadena, the annual Christopher Street West Parade in West Hollywood (June), the Countywide elections (June and November), response to Soccer-related civil disturbances in Huntington Park (June), and Sheriff Sherman Block’s funeral in November. EOB also coordinated scene security and support activities for two phases of the Sergeants’ exam at the Los Angeles Convention Center in July and October.

EOB continued its efforts toward building an Operational Area response to terrorism involving Weapons of Mass Destruction, including acts of NBC terrorism. EOB continued serving with other agencies in the Operational Area on the Los Angeles County Operational Area Terrorism Working Group (TWG). In addition, EOB hosts the Terrorism Early Warning Group (TEW), a multi-agency indications and warning effort

designed to guide training and planning efforts necessary to cope with acts of terrorism, as well as other threats to the Operational Area's critical infrastructure. EOB continued development of the TEW's Crisis and Consequence Management Information System (CCIMS), in partnership with the Lawrence Livermore and Los Alamos National Laboratories.

Throughout all of these diverse projects, EOB emphasized forging inter-agency links and collaboration, refinement of procedures, and the use of emerging technologies, in order to foster improved decision making for more effective emergency management.

LANCASTER STATION

Located in the northernmost portion of Los Angeles County, Lancaster Station covers an area of 586 square miles, and serves a population of approximately 187,000. The station has 189 sworn personnel and 74 civilian personnel assigned.

Several specialized units have done an outstanding job this past year.

Operation Men In Black was one of the most successful projects of the year. Funded through a Federal grant obtained by the City of Lancaster, and operated by the Station Directed Patrol Unit, the project involved establishing an undercover storefront sting operation which purchased stolen property and narcotics from criminals over a six-month period. More than \$1.1 million worth of property was purchased, including 79 stolen cars and 46 firearms. The project culminated in a massive roundup of suspects on April Fools Day. Three hundred and forty-eight personnel from throughout the Department participated in the arrests of 75 of the 82 suspects identified. With the cooperation of the District Attorney, most suspects were convicted of felony charges and are now serving prison terms.

Another highlight of the year was the development of the Rape Aggression Defense classes. These classes were taught by Station Crime Prevention Deputies in cooperation with Santa Clarita Station personnel. The course is designed to teach self defense skills to women, and will be expanded in 1999 to include children.

The Station's gang unit got a big boost from a Gang Violence Suppression grant. The grant provided funds for a full time Sergeant to supervise the investigators contracted by the City of Lancaster, equipment for the unit, and overtime to conduct parole and probation searches. This grant also provides a full time Deputy District Attorney and Probation Officer, which ensures vertical prosecution and consistent probationer maintenance.

The School Deputy program was another success story in 1998. The program was expanded to include eight deputies and a sergeant who cover area high schools, continuation schools, and middle schools. With deputies assigned, full time, to the campuses, problems are dealt with early. This early intervention has prevented the occurrence of major incidents on the school campuses. The school districts have supported a zero tolerance policy for crime, gangs, drugs, and weapons on campus, further enhancing the security of the students and faculty.

The integration of these programs, combined with some of the most experienced patrol personnel in the County, and the ongoing support of the City of Lancaster, has enabled Lancaster Station to achieve an 18% reduction in the Part I Crime Rate for 1998.

MALIBU/LOST HILLS STATION

The station provides policing services for five contract cities and a number of unincorporated areas. The incorporated cities are Agoura Hills, Cal-

abasas, Hidden Hills, Malibu, and Westlake Village. The unincorporated communities are Topanga, Chatsworth, and the Santa Monica Mountains. The station works closely with each entity, by having a deputy, sergeant, and lieutenant act as liaison officers to provide direct access to the elected officials, city staffs, appointed committees, and residents. The western portion of Los Angeles County serviced by this station is a blend of residential, rural, mountain, beach, and recreational areas. Our 200 square mile area is home to 100,000 residents, and, on summer days in Malibu, the population increases to more than half a million people.

Community Safety

Crime rates are down in all areas, especially violent crimes and crimes of opportunity. Increased presence through an aggressive traffic enforcement program, diligent detective work, and attention to juvenile problems are the probable factors.

Traffic Department

Injury accidents are down; citations are up. All other statistics remain about the same. Increased presence, due to purposeful enforcement, has translated to a reduction of problems in all other areas. The Enforcement Index is 97.3.

Detective Bureau

A fully staffed Detective Bureau that puts emphasis on pattern crimes and repeat offenders has lead to some high profile arrests and a combined clearance rate of 30%.

Juvenile Intervention Team

Innovative programs such as Student and the Law and the Parenting Class, have lead to State recognition. Working closely with the schools and the courts, the J-Team has solved many crimes and developed a good relationship with the youth of the community.

Awards

Station personnel have been recognized in formal ceremonies presented by

the Sheriff's Department for Valor, the County Board of Supervisors, and at community observances such as the American Legion, Elks, Chambers of Commerce, Rotary, and others.

Beach Team

A combined task force of regular and reserve deputies again kept the Malibu beaches a safe place to visit for recreation. Zero tolerance for alcohol, drugs, and gangs resulted in a high number of citations and a low number of problems.

Community Programs

Deputies and volunteers regularly participate in celebrations sponsored by each of the contract cities and unincorporated areas. Booths have been set up to promote SANE (now STAR), recruitment, and the department in general. These activities provide the community with an understanding of the services provided by the Department and the local station.

Disaster Preparedness

Major disasters such as fires and floods were at a minimum this year, giving the station and the communities usually affected by these disasters an opportunity to perfect techniques and build resources for the future. Joint training exercises were conducted with the Fire Department and CHP. We cooperate frequently with the cities and unincorporated communities in drills with the EOC and in using the EMIS system.

Reserves

The uniformed reserves, search and rescue team, and specialists have contributed more than 18,000 hours during the last year. They have participated in patrol, Beach Team, warrant service, special assignments, demonstrations, and lifesaving activities.

Station Activities

Annual events such as Open House and the Community Golf Classic create a friendly atmosphere between the station and the public. School tours, scouts, and youth groups regularly visit the station.



*Captain William J. Mc Sweeney
Malibu/Lost Hills Station*

Volunteers

The community is welcomed at the station and encouraged to help station personnel and the community by participating as members of committees, and as selected volunteers in county and city organizations.

PALMDALE STATION

On January 1, 1998, Palmdale Sheriff's Station began operations as a standalone station. Deputies assigned to Palmdale Station patrol the City of Palmdale and more than 20 communities in the unincorporated areas of the South Antelope Valley. Palmdale Deputies patrol an area of approximately 800 square miles and serve a population of more than 180,000 people.

In February of 1992, Palmdale Station began service as a store front satellite facility to the old Antelope Valley Station. When the store front opened, only 70 personnel were assigned. By the end of 1998, 150 personnel were assigned to the station. In the summer of 1998, the expansion and remodeling of the Palmdale Station began. Upon completion of the construction in early 1999, the station will grow from 5,000 square feet to 13,500 square feet. This growth will greatly enhance the service provided to the public by the Los Angeles County Sheriff's Department.

In December of 1998, Sheriff Leroy D. Baca dedicated the Littlerock Sheriff's Service Center. This facility, which has been provided by a Littlerock business, will serve as the base of operations for the Littlerock Resident Deputy, Littlerock Volunteers on Patrol, the County Crime Task Force, and the East County Graffiti Abatement Program Deputy.

During 1998, the City of Palmdale expanded the Partners Against Crime (PAC) Program. The PAC program is a true partnership between our Department, the City of Palmdale and our community. This program focuses on the City's downtown area. This multi-phase

program educates apartment owners and managers with regard to proper rental management, including how to identify criminal activity, how to screen prospective renters and how to follow proper eviction procedures. In addition, four Deputies are assigned to work with the residents and managers in creating a safe environment. These Deputies participate in the development of Neighborhood Watch programs, while assuring that each building meets Crime Prevention Through Environmental Design (CPTED) standards. None of the PAC goals could be achieved without these deputies working hand-in-hand with the City's Code Enforcement, Building and Safety and Public Safety Offices.

To compliment the work of these PAC Deputies, the Youth Crime Task Force has completed its second year of operation. The focus of this task force is on daytime crime perpetrated by juvenile suspects, particularly those on probation. A two-deputy no-call car was created in 1998 to work nights in the PAC area. This car has already had a positive impact on the area's quality of life. These deputies focus on specific problems encountered by the PAC Deputies, which require night enforcement.

This was the inaugural year for the Palmdale Station Volunteer on Patrol Equestrian Unit. The mounted unit includes 32 members from throughout the Antelope Valley who give up many weekends to participate in the extensive training needed for both them and their horses. These volunteers have worked many hours at special events all over the Antelope Valley, and have received much acclaim from the public for their professionalism and efforts in providing service to their community.

In April of 1998, both the Palmdale and Lancaster Stations, in partnership with Jones Inter Cable, initiated a new television show, "Street Beat." Once a month, each station participates in a show highlighting the activities of that station. In 1998, Palmdale's version highlighted the PAC program, the Gang

Unit, the Volunteers and various individuals who work at the station. This program also profiled suspects who were at large in the community. In almost every case, these suspects were in our custody in the same week in which they were featured, all due to calls from the program's viewers.

Due to the partnerships developed with the community and the City, along with the hard work of all the personnel assigned to Palmdale Sheriff's Station, 1998 saw a 15% decrease in crime in the city of Palmdale and a 30% decrease in crime in the unincorporated areas. This partnership will grow even stronger in 1999, when the Palmdale Station Crime Prevention Deputies and the City's Public Safety Officers share an office in the newly expanded Station.

SANE BUREAU (Substance Abuse Narcotics Education)

In 1998, the SANE Bureau continued to provide drug abuse prevention classes to more than 80,000 students throughout Los Angeles County. The lessons presented by the SANE deputies to the 4th, 5th, and 6th grade students, cover proven prevention techniques to empower youth to resist the lures of drug use and gang involvement, while improving their self esteem. In addition to teaching an average of 68 classes per month, the deputies attend more than 100 special events such as health and safety fairs, station open houses, scout events, sporting events, parent/neighborhood watch meetings, PTA events, Sheriff's Civilian Academy presentations, school carnivals, and Red Ribbon Week events. The deputies are also active in before and after-school programs, spending quality time with students, serving as role models and providing a positive relationship with law enforcement.

In addition to their school commitments, SANE deputies assisted in several major fund-raising events. In April, SANE deputies assisted at the Sheriff's Youth Foundation annual gala dinner

where the Youth Foundation honored a SANE deputy, two students and a teacher-of-the-year. In July and August respectively, the SANE deputies assisted at two golf tournaments, the SANE Golf Tournament held at the Hacienda Golf Club coordinated by Walnut Station, and the Sheriff's Shootout at Sherwood Country Club in Thousand Oaks sponsored by the Sheriff's Youth Foundation. These events were extremely successful. The funds raised enabled the Sheriff's Youth Foundation to purchase items for the SANE deputies to give to students which will continue to remind them of the message to say no to drugs and gangs.

In July of 1998, the city of Santa Clarita sponsored the 5th annual SANE Summer Camp at Camp Cumorah Crest in the Angeles National Forest. The week-long, live-in camp was attended by 106 students from Santa Clarita schools. All the campers were 6th graders going into the 7th grade. SANE deputies served as camp counselors and provided SANE classes with emphasis on life skills, coping skills, and image building. This theme was carried over into supervised outdoor recreational activities that developed cooperation and a team concept. The camp focused on extending the concepts that the students had learned in the three-year SANE Program.

In August 1998, the SANE Bureau's North Team sponsored the second annual Calamigos SANE Summer Camp. Calamigos Camp, in the Malibu Hills, was again the setting for this year's camping effort. The day camp was operated for two weeks, with approximately 40 children attending each week from the Malibu, Calabasas, and Agoura Hills area. They enjoyed a diversity of camp activities such as swimming, sports, hiking, boating, listening to a variety of speakers and viewing exhibitions. Throughout the camp, emphasis was placed on the theme, "SANE kids say no to drugs and gangs."

On May 2, 1998, the 1st annual La Canada SANE fund raiser was held at Memorial Park in La Canada. The theme



Captain Harold J. Hladky
Palmdale Station

of the event was a concert in the park, with a 50's band, dancing, food, games, a dunk tank, and numerous Sheriff's Department displays. With support from the school district, and the children and families of La Canada, the fund raiser was a rousing success, raising approximately \$13,000 to enhance the SANE program in the La Canada area schools.

Industrial Relations Unit

This Unit acts as liaison during labor disputes, by establishing and maintaining a positive relationship with labor and management representatives. The unit sergeant also aids Department personnel in effectively carrying out duties and responsibilities during labor disputes.

Labor strikes are generally newsworthy and often result in legal action. The sergeant assists Department personnel by providing expertise in the area of labor relations and related labor laws.

Mounted Posse

The Mounted Posse consists of 56 personnel who are assigned to three regions and the Mounted Enforcement Detail Company, which is assigned to Special Enforcement Bureau. The Posse functions as an integrated support unit to the Department in emergency situations requiring the expertise of trained horse riders for searches and rescues in terrain which is not accessible by motor vehicles or helicopters. The posses also routinely patrol river beds and hazardous mountain areas, and assist, as needed, in certain crowd control situations. They are now being used frequently to patrol large shopping mall parking lots. Both Mounted Enforcement Detail personnel and regular posse members participate in numerous parades and special events throughout the year.

Collectively, the 729 reserve deputies worked approximately 241,508 hours this year. This represents an approximate savings to the County of \$9 million.

Reserve Forces Bureau is also responsible for the administration of the reserve academy. The academy trains non-designated Level I and Level II reserves for the Sheriff's Department and participating agencies. Academy classes are held twice a year on a semester basis. The classes are conducted concurrently at STARS (Sheriff's Training and Regional Services) Center and the College of the Canyons in Santa Clarita. The academy meets three times a week

for 20 weeks. The classes are held for ten hours on Sundays and for four hours each on two weekday evenings. Level II recruits attend the first 13 weeks and Level I recruits attend the entire 20 weeks.

Search & Rescue

The Search & Rescue teams provide services to those citizens who become stranded, lost or injured in all areas of Los Angeles County. They assist other Departmental units and other law enforcement agencies with specialized operations. The 104 reserves who comprise the seven search and rescue teams undergo extensive mountaineering training. In addition, each member is required to be an emergency medical technician. Team members may be called out at any time, day or night. When responding to a call, each member is equipped to be self-sufficient for several days in any weather condition.

Uniform Reserves

The Uniform Reserves are assigned to each of the Sheriff's stations in the county. They perform general law enforcement patrol duties as well as assisting in station-level detective functions. Also, within the uniform reserve structure, are the specialist companies: Administrative Support, Custody, Medical, Media, Motorcycle Unit, Communications and Fleet Management, Management Project, Emergency Operations Bureau, Detective, Universal Surveillance Apprehension Team, Weapons Training, Narcotics, and Headquarters. There are currently 569 uniform reserve personnel.

SANTA CLARITA VALLEY STATION

Santa Clarita Valley Station, located in north Los Angeles County, provides police services for the County area and the contract city of Santa Clarita. Station personnel cover an area of more than 600 square miles, and provide quality service for nearly 200,000 residents.

For the year 1998, Santa Clarita was the fourth safest city in the United States for cities of more than 100,000 in population, according to the Federal Bureau of Investigation's statistics.

Awards

Detective Dave Lingscheit was selected as the "Investigator of the Year" by the Southern California Chapter of the Association of Fraud Investigators. Detective Lingscheit put an end to an extensive counterfeit credit card ring involving numerous suspects. The losses were in excess of 12 million dollars, with potential losses estimated at 60 million dollars. All the suspects have either pled guilty or have been found guilty.

Deputies Tony Arnold, Alain Budge, Greg Hutt, Mike Shapiro, and Guillermo Vera were all honored by Mothers Against Drunk Driving (MADD) for their efforts to stop drunk driving. Deputies Arnold, Budge, Shapiro, and Vera each made in excess of 50 DUI arrests in 1998, Deputy Hutt made 100 DUI arrests.

Community Advisory Committee (C.A.C.)

Our very active C.A.C. was involved in several projects of benefit to the community and station personnel. They obtained contributions to fund supplies for radio cars. These supplies were ones not normally supplied by the Department. These supplies included 30 shovels (a north county necessity), 30 sets of binoculars, and 200 disposable cameras.

In cooperation with the station, City of Santa Clarita, SCV Anti-Gang Task Force, and SCV Booster Club, the C.A.C. established the Santa Clarita Valley "Crime Tip Hotline" (284-2-TIP) and obtained funding for an extensive marketing campaign regarding the service. This program was based on its highly successful counterpart at Lancaster Station, and was accomplished with the assistance of Lancaster Station personnel.



*Helen H. Reardon
Director
Office of Special Programs*

RESERVE FORCES BUREAU

The Bureau is the administrative headquarters for the Department's Reserve Program. The Reserve Program consists of four major components: uniform reserves, search and rescue, mounted posse, and the reserve academy. The Bureau's diversified responsibilities also include operating as administrative headquarters for the Explorer Program, Office of Special Programs, and the Industrial Relations Detail.

Explorers

The Law Enforcement Explorer Program is a Sheriff's Department youth oriented program affiliated with the special interest phase of the Boy Scouts of America. The primary purpose of this program is to provide a means by which young men and women may determine, through actual experience, if they would like to pursue a career in law enforcement.

Deputy explorers assist regular deputy sheriff personnel by performing nonhazardous duties such as report writing, bicycle programs, crowd assistance at parades and civic events, anti-crime campaigns, search missions, fingerprinting, statistical computations, and miscellaneous community relations functions.

The Sheriff's Department has 19 Explorer Posts with more than 400 explorers. Last year these explorers donated approximately 100,000 hours of service, saving the Department thousands of taxpayers' dollars.



*Captain Donald A. Rodriguez
Santa Clarita Valley Station*

The C.A.C. worked with a local developer who agreed to build and donate an office in a new entertainment and business center in Canyon Country. This office will house a Santa Clarita Valley Station store front operation. The building is scheduled for completion in spring 1999.

The C.A.C. also worked with the city to establish a false alarm ordinance and a juvenile diversion program. In addition, the C.A.C. obtained a \$2,000 donation for our Search and Rescue Team, and established a station employee of the month award in cooperation with Hometown Buffet.

Grants

The City of Santa Clarita, in partnership with the station, obtained grants that helped provide resources for special needs. As a result, the station added a fully dedicated Domestic Violence investigator, developed a drug education program for junior high students, and funded a sergeant position and equipment for the newly formed Canyon Country Community Interaction Team (C.I.T.). This four-deputy community oriented policing team, has earned rave reviews from city officials, residents, and business owners, due to their efforts in dealing with crime and quality-of-life issues.

Haunted Jail House

Our annual Halloween event, the Haunted Jail House and Station Open House, drew a record crowd of 5,600 frightened visitors in 1998. This event is held in cooperation with the Boys and Girls Club. The proceeds from the Haunted Jail House benefit the Boys and Girls Club, while the proceeds from the associated carnival go to a variety of organizations such as Aid to Victims of Domestic Violence and United Mothers.

High Impact Traffic Team

The four-deputy H.I.T. team was formed to provide selective traffic enforcement in a number of areas. One of its primary missions was to mitigate the numerous accidents caused by right-of-way violations, especially at major intersections. These violations are nearly impossible to enforce without a coordinated team effort. In addition, the team responds daily to different schools throughout the city, where the traffic flow conditions have become extremely hazardous for children. The team is responsible for traffic oriented patrol requests, fatal traffic accident investigations, CDL checkpoints and DUI checkpoints and saturation patrols. Their efforts have reduced right-of-way accidents, improved school safety, and enhanced accident investigation and DUI enforcement. The community has responded with numerous commendations.

Nissan Open

Santa Clarita hosted the 1998 Nissan Open, usually held at the Riviera Country Club. The event was held at the Valencia Country Club, drawing record crowds of more than 100,000 spectators during the four-day tournament. Nearly a year of planning, to deal with security and traffic concerns, paid off with an incident-free event. The tournament's success, viewed world-wide via television coverage, brought a great deal of favorable attention to the City of Santa Clarita, the Department in general, and Santa Clarita Valley Station in particular.

TEMPLE STATION

Temple Station, located in northeast Los Angeles County, provides police services to the contract cities of Bradbury, Duarte, Rosemead, South El Monte and Temple City, along with the unincorporated County areas of Monrovia-Arcadia-Duarte, North San Gabriel/East Pasadena, and South San

Gabriel. Temple Station also provides law enforcement services for the mountainous area of Chantry Flats, located in the Angeles National Forest above the city of Arcadia. Temple Station's patrol area encompasses 66 square miles and serves a population of approximately 200,000 people.

Advanced Community Academy

Temple Station has developed an Advanced Community Academy curriculum for graduates of our previous 13 Community Academy classes. The advanced curriculum covers topics such as driving skills, domestic violence issues, tactical equipment and deployment policies, laser village and advanced role-playing scenarios. This course has received an enthusiastic response from area residents who successfully completed the basic curriculum.

Community Advisory Committees/Town Council

The unincorporated areas of Temple Station are represented by three Community Advisory Committees (CAC). These groups are composed of volunteers from their respective communities who continue to be a valuable communication link between Temple Station and the communities we serve. In addition, Temple Station has an Asian Advisory Committee which assists us in understanding cultural matters within the Asian community. The Monrovia-Arcadia-Duarte Town Council is an elected body of community representatives who work closely with Temple Station to resolve quality-of-life issues impacting their community. It is this type of demonstrated commitment from our community members which enables Temple station to remain on the cutting edge of Community Oriented Policing.

Home Safe Program

Temple Station has implemented a "Home Safe" program to better serve the Alzheimer/Mentally Disabled patients living in the communities we serve. The program concept is simple and allows Temple Station to track the patients living in our station area. Lost patients are quickly reunited with their family members or caretakers after they have been located wandering in our streets. Program participation only requires that a family member or caretaker provide a photo of the patient and fill out a form with the patient's pertinent information, i.e., name, address, emergency contacts and medical information. The photos and information are placed into the Home Safe book which is kept at the station desk. The book provides a ready reference for field deputies when handling this type of patient. The Home Safe program can help relieve the patient of unnecessary stress and reduce the length of time deputies spend handling 'found adult' situations.

Neighborhood Watch Statistics

Temple Station special assignment and Cops High Impact Team Deputies were very active in establishing new neighborhood watch groups. Additionally, these deputies remained available to established groups for presentations and updates on crime trends. Overall, Temple Station had 424 active neighborhood watch groups during calendar year 1998.

Internet Web Site

The Temple City Special Assignment Team created an internet web site for the public www.webimaging.com/tcsheriff/, as an alternative method of accessing information from the Sheriff's Department. The web site currently provides information about the Temple City Special Assignment Team, local crime statistics, the Neighborhood Watch program, the



*Captain Jon Engebretsen
Temple Station*

Business Watch program and other crime prevention information. In addition, numerous computer links to other government and law enforcement agencies have been attached to the web site.

Temple led all Sheriff's Stations with 606 D.U.I. arrests and 27,488 hazardous citation issuances for 1998.



Captain Marc L. Klugman
Transit Services Bureau/
Metrolink Bureau

Major Awards

Deputy Paul Clay was selected Los Angeles County Employee of the Month for February 1998. Deputy Clay and London Lee, an eighth grade student and member of the Temple Station Pamela Park Youth Activity League, were honored in May 1998 as the Youth Activity League Deputy and Student of the Year. (see page 127 and 128)

Station Volunteer and Explorer Programs

Temple Station has benefitted from a high level of community involvement with our volunteer, reserve deputy and explorer programs. The station currently has:

- 23 Deputy Sheriff Explorers
- 28 search and rescue team members
- 8 posse members
- 18 reserve deputy sheriffs
- 96 civilian volunteers involved in Hamwatch, Clergy, Volunteers on Patrol and booster programs.
- 173 Total volunteers

Deputy Explorer Lisa Lopez received the "Explorer of the Year" award for Los Angeles County for 1998.

Traffic Enforcement

Community members who were surveyed by C.O.P.S. High Impact Team members and Special Assignment Deputies in Temple Station's jurisdiction, overwhelmingly listed traffic safety as their number one concern. Temple Station personnel have demonstrated their commitment to Service Oriented and Community Oriented policing by dramatically increasing traffic enforcement efforts.

TRANSIT SERVICES BUREAU

The November 1997 merger between the Metropolitan Transportation Authority Transit Police Department, the Los Angeles Police Department, and the Los Angeles County Sheriff's Department, created a unique environment . . . a Partnership in Transit Policing.

Our Department's responsibility in this partnership is to provide law enforcement services to MTA's Metro Blue and Green Line Light Rail System, and all of the MTA buses outside the City of Los Angeles.

Bus Operations

Personnel working Bus Operations respond to all transit-related calls on MTA buses outside the City of Los Angeles. This includes the Long Beach Transit System, the Santa Clarita Transit System, the Antelope Valley Transit System, and the Montebello Transit System.

Uniformed deputies board buses on a daily basis in order to conduct fare enforcement checks. Deputies also board buses in an undercover capacity, in order to observe crimes in progress and to arrest or cite violators. Deputies respond to emergency calls for service which are not criminal in nature, such as "person injured" calls and traffic

BUS STATISTICS	
Average Daily Ridership	299,600
Approximate Total Ridership	96,710,129
Total Bus Boardings	28,426
Citations Issued	3,249
Total Arrests	735

accidents, in order to act as liaison with other agencies who have traffic responsibility. Deputies also respond to unknown type calls, in order to assist the bus operators and supervisors with our expertise.

Detective Unit/ Crime Impact Team

The Bureau's Detective Unit was responsible for investigating more than 1,100 reported crimes and for filing on 1,200+ suspects arrested by patrol deputies. The Detective Unit is unique in that its geographical area is not comparable to any other station. Detectives file cases in approximately 25 different courts, and deal with 15 separate city and district attorney's offices. To succeed in its investigative mission, an intricate collaboration has been established, by the Bureau's detectives, with a variety of agencies throughout Los Angeles County.

The Crime Impact Team comprises a force of ten members of the Bureau who work undercover or in uniform. Their primary mission is to curb the vandalism and graffiti on the buses and trains which impact the quality of life of the riding public.

Light Rail Operations

The Metro Blue Line is 22 miles long with 22 passenger stations, while the Green Line comprises 19.9 miles of track and has 15 passenger stations. Deputies are deployed throughout the system, both in uniform and in undercover roles, to enhance passenger safety as well as improve the quality of life on the trains.

BLUE LINE STATISTICS	
Average Daily Ridership	49,300
Approximate Total Ridership	15,445,975
Percentage of Riders Inspected	16%
Evasion Rate	0.76%
Evaders Cited	10,425
Citations Issued	18,276
Total Gate Violations	3,382
Total Arrests	760

Motorcycle Detail

In July, Supervisor Yvonne Braithwaite Burke took a pro-active stand and the first step in reducing rail-related fatalities. Through a close relationship with the MTA Board and the Sheriff's Department, a decision was made to fund and implement a Motorcycle Detail within Transit Services Bureau. MTA/Sheriff motorcycles can now be seen daily along the rail right-of-way, ensuring safe passage of rail patrons, motorists, and pedestrians.

Photo Enforcement

Photo Enforcement began in L.A. County in September 1995 with a pilot railroad-crossing enforcement program. Working closely with the MTA, this program is now recognized as the most aggressive and successful campaign in the country. When a violation occurs, two photos are taken. . . one as the vehicle triggers the controller and another after a specified distance. The two photos document the vehicle's progression through the intersection. Once the driver views his/her photographs showing the violation, 99.9% admit their guilt and mail in the fine. The remaining .1% are ordered to pay the fine after the photographs are entered into evidence during their trial.

METROLINK BUREAU

Metrolink Bureau continues to serve the Southern California Regional Rail Authority (SCRRA) under its second extension of the original three-year contract. As one

GREEN LINE STATISTICS	
Average Daily Ridership	21,400
Approximate Total Ridership	6,420,050
Percentage of Riders Inspected	13%
Evasion Rate	0.78%
Evaders Cited	3,953
Citations Issued	5,039
Total Arrests	253

of the Department's early excursions into transit policing, Metrolink has provided valuable experience and a window of opportunity into the growing transportation arena.

Metrolink Bureau patrols the entire railroad right-of-way within Los Angeles County, and provides onboard security throughout the six-county system. Investigative activities take Metrolink's two detectives into jurisdictions throughout Southern California.

Metrolink Bureau's duties encompass not only providing security for employees and customers, but providing expertise in enforcement of laws related to the rail system, educating the public, and consultation to improve engineering.

Education includes teaching highway rail grade crossing safety to various groups; among them students, professional drivers, bus operators, school bus drivers, law enforcement, firefighters, and other civic groups around Southern California. This important activity is required of the SCRRRA by the Federal Railroad Administration (FRA), and is supported by Operations Lifesaver, Inc., (OLI), a coalition of railroads, nationwide, for the prevention of railroad accidents. Metrolink Bureau participates aggressively in the education program and is recognized across the nation as an innovator in this field.

Consultation includes working with railroad personnel in the design, development, and construction of stations, platforms, and grade crossings system-wide. Fencing portions of the right-of-way, landscaping, lighting placement at the station platforms, and installation of intersection islands are examples of the safety issues evaluated by Metrolink Bureau personnel.

Enforcement includes aggressive efforts to maintain order and the quality of life on board the system. Metrolink Bureau recognizes that much of the system's success depends upon the patrons' perception of safety on Metrolink's trains and in their parking facilities. Attention to detail and strict enforcement of Metrolink's rules and policies has resulted in high marks from patrons for safety and security along the system.

To police the 416 miles of the six-county system is a unique law enforcement experience, requiring coordination and cooperation with more than 35 county and municipal law enforcement agencies, as well as state and federal regulatory authorities. Transit policing is a rewarding and growing field for the Los Angeles County Sheriff's Department, with a bright future in the growing transportation environment of Southern California.

METROLINK BUREAU STATISTICS

<i>Average Daily Ridership</i>	<i>25,286</i>
<i>Approximate Total Ridership</i>	<i>6,591,404</i>
<i>Citations Issued for Rail-Related Violations</i>	<i>2,792</i>
<i>Fare Enforcement Citations/Warnings Issued</i>	<i>10,040</i>
<i>Total Citations/Warnings Issued</i>	<i>12,832</i>
<i>Total Arrests for Law Violations along the Metrolink Right-of-Way</i>	<i>1,288</i>