

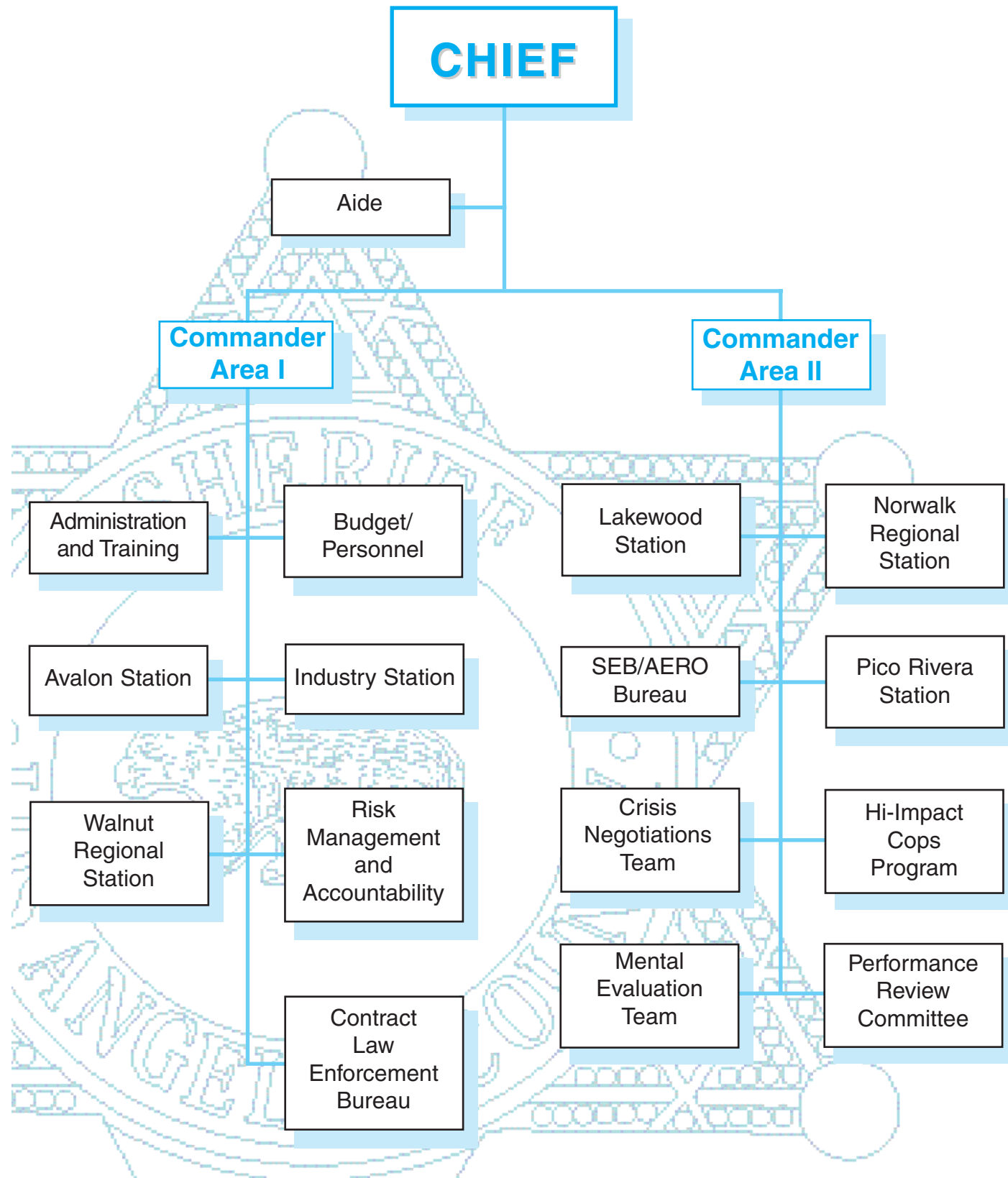


FIELD OPERATIONS REGION III



Y E A R I N R E V I E W • 1 9 9 8

## FIELD OPERATIONS REGION III



## FIELD OPERATIONS REGION III

Field Operations Region III is responsible for the performance of the basic police tasks of protecting life and property, preserving the peace, preventing and suppressing crime, and the apprehension of violators of the law. These functions are carried out at the following Sheriff's stations and specialized units: Avalon, Industry, Lakewood, Norwalk Regional/Pico Rivera Local Stations and Walnut Regional/San Dimas Local Stations; Special Enforcement Bureau, Aero Bureau, Crisis Negotiations Team, Mental Evaluation Team and Contract Law Enforcement Bureau.

### AVALON STATION

Avalon Sheriff's Station is located on Catalina Island, which is twenty-six miles off the California coast. Encompassing about seventy-six square miles, the island boasts mild 75 degree summers and winter temperatures which average 65 degrees. The sun shines on the island an average of 267 days a year. All groceries, fuel, building materials, and vehicles are shipped to the island by barge or tugboat. Visitor transportation is available, year-round, by boat and helicopter.

Catalina Island has a population of approximately 3,500 full time residents, 3,200 of which live in the 2.6 square-mile city of Avalon. Avalon averages more than a million visitors a year.

Avalon Sheriff's Station provides law enforcement for Santa Catalina Island, San Clemente Island, and the ocean waters between the islands and the mainland of southern California. Station personnel consists of thirteen sworn and ten civilians, augmented by as many as twelve reserves during the busiest holiday seasons and on summer weekends.

Two Sheriff's Search & Rescue teams, one assigned to the East end and one to the West end of the island, are made up of deputy sheriffs, firemen, harbor patrolmen, paramedics, and local civilian volunteers. During 1998, they donated hundreds of hours responding to lost hikers, downed aircraft, dive accidents and stranded cliff climbers.

In July, 1998, Avalon Station hosted its inaugural LASAA "Gold Star Dive" in the Casino Dive Park. The fund raiser brought in more than \$5,500 to benefit the Catalina Hyperbaric Chamber and the Avalon SANE Program. The event drew more than 100 dive participants. On Saturday, October 24, 1998, Avalon Station hosted a benefit at the Aquarium of the Pacific in Long Beach, to aid the expansion of the SANE program on the island.

The resident deputy at the Isthmus Facility in Two Harbors, at the west end of the island, provides law enforcement for the rapidly growing harbor and campground facilities.

Avalon station personnel are very involved in all aspects of island life, making it a unique form of community oriented policing.

### CONTRACT LAW ENFORCEMENT BUREAU

Contract Law Enforcement Bureau administers the contractual law enforcement program to 40 of the 88 incorporated cities within Los Angeles County, bringing in revenue totaling \$160 million. In addition to being tasked with cost analysis studies, the Bureau also manages law enforcement contracts with other public and private entities including the MetroLink commuter rail system, as well as more than 500 additional contracts ranging from school districts to private entities. The Bureau also oversees the contractual development



Chief Kenneth L. Bayless  
Field Operations Region III



Commander Michael M. Nagaoka  
Area I



Commander Linda C. Healy (Acting)  
Area II

of annual events such as the Pasadena Rose Parade, the Christopher Street West Parade in West Hollywood, and the Antelope Valley Fair.

In late January, Contract Law staff coordinated a two-day conference for more than 100 Sheriff's Department Executives and City Managers. The Conference provided the participants with a forum where they could share ideas, strategize, and formulate goals, while also providing an informal atmosphere in which both city officials and departmental executives could strengthen their cooperative partnership.

This year, Contract Law again coordinated a welcoming luncheon for our contract cities' newly elected officials, in order to provide them with a formal introduction to our Sheriff and the Department's management staff.

In October and November, the Bureau conducted its Sixth Basic Council Academy to provide our contract city and town council officials with a general overview of our Department's operations and missions. The curriculum of this 16-hour Academy included role playing at Laser Village, in order to provide the participants with a "windshield" perspective of the duties of a patrol deputy. To date, more than 170 contract city officials and town council members have participated.

Contract Law conducted its first Advanced Council Academy, in order to provide Basic Academy graduates with the opportunity to obtain a more in-depth perspective of various line-level operations, such as homicide and narcotic investigations. The Advanced Council Academy also provided hands-on training, including force and driver's training, and live weapons firing.

In August, the Bureau coordinated the 24th Annual California Contract Cities Barbeque, hosted by the Sheriff. The 900 people who attended the event included representatives from our contract cities, other county departments,

and Sheriff's Department personnel. At the conclusion of this event, the Sheriff presented Certificates of Completion to the 25 people who completed the Advanced Academy.

## INDUSTRY STATION

In 1998, Industry Station continued its commitment to service-oriented policing through the dedicated efforts of the station men and women, working hand-in-hand with the community to improve the quality of life. These goals were attained through more efficient deployment of detective services, the deployment of federally funded COPS Teams, the assistance of the County Enforcement Team, funded by Supervisors Molina and Knabe, and a cadre of 130 trained community volunteers working the Cities of Industry, La Puente and La Habra Heights and the county areas of Basset, Valinda and Hacienda Heights. During 1998, a 10% reduction in Part 1 crimes was achieved for the more than sixty-four square miles and 190,000 residents served by Industry station.

### City of Industry

The City of Industry continues to be the driving force behind the very successful Youth Activities League which operates in four parks in the area. Each park is supervised by a deputy sheriff who provides leadership, mentorship and friendship to at-risk youngsters in our communities. An annual golf tournament provides funding for activities which include baseball, basketball, soccer and excursions away from the area to learn about or participate in hiking, scuba diving and camping. During 1998, the Industry Station youth activities programs provided opportunities for 2,500 youngsters to participate in these activities.

### City of La Habra Heights

In 1998, the city of La Habra Heights began an aggressive commitment to a safer, more prepared community by bringing together city

government, the community and the Sheriff's Department in an undertaking of "what if" Emergency Operations scenarios. These scenarios targeted evacuations in the event of wild fires, and explored what to do in the event of a crippling earthquake.

Team members began meeting quarterly with city officials and, as a result of these sessions, produced a highly effective traffic enforcement plan that produced an incredible 89% increase in traffic enforcement. The plan included utilization of station and department resources to target violations determined to be the most prolific cause of accidents. Specially trained Department Reserve Motor Deputies were utilized as frequently as possible in this endeavor.

Station Volunteers-On-Patrol, on horseback, provided weekend patrols on the various trails within the city.

County Enforcement Teams from the communities of Basset, Hacienda Heights and Valinda augment the patrol units which serve these areas. Town hall meetings are held every four months, allowing the community to interact, voice concerns and pose questions to deputies who patrol their neighborhoods.

Industry personnel have developed several cooperative enforcement programs and strategies which work hand-in-hand with County Probation, State Parole, and the Department's Operations Safe Streets and Gang Enforcement Detail.

### City of La Puente

During 1998, La Puente funded its first dedicated Crime Prevention Officer in many years, and brought the first motor officer to Industry Station. The city's Special Assignment Officers worked diligently with the community to improve the quality of life for La Puente residents.

The Crime Prevention Unit developed the Neighbor-to-Neighbor program to enhance the quality of life of persons who are aged or disabled.

Meals-on-Wheels agreed to supply a questionnaire, which, if returned, assured that a Sheriff's representative would visit periodically. The program currently serves more than thirty families in La Puente and another twenty-five families in the unincorporated communities. This program is actively administered by our Volunteers-on-Patrol.

## LAKWOOD STATION

Lakewood Station is the highlighted unit for Field Operations Region III. (see page 116)

## NORWALK STATION

Norwalk Station is located in the southeast corner of Los Angeles County. The station provides service to more than 220,508 residents over a 23.56 square mile patrol area.

In 1998, law enforcement services were provided on a contractual basis to the cities of La Mirada, Norwalk, and to the unincorporated community of South Whittier.

During 1998, existing community-based policing programs were strengthened through community involvement. The station's commitment to Community-Oriented Policing has again been the central factor in the expansion and delivery of law enforcement services. Together with the continued support of the local contract city governments and the commitment of the two supervisorial districts that make up the South Whittier County area, community partnerships continued to evolve. With an approval rating above 98 percent for sheriff's programs in the area, the community has continued to identify gangs and narcotic enforcement as their highest priority. Norwalk Station's patrol force, in partnership with the Sheriff's Advisory Council, the High Impact COPS Team and the South Whittier COPS Team, has maintained a zero tolerance for gang and narcotic activity. The unquestion-



Captain Marvin Dixon  
Norwalk Regional Station

able success of the program has been enhanced by the involvement of area residents and by the many volunteers who have staffed the community storefront.

Norwalk Station's productivity and crime reduction efforts continued to be significant in 1998. Throughout the station jurisdiction, Part I crimes dropped 16.1 percent. Highlighting the decrease in crime was a 27 percent decrease in grand theft auto, a 25 percent decrease in aggravated assaults, a 22.9 percent decrease in forcible rape and a 22 percent decrease in both robbery and burglary.

The successes of Norwalk Station were a direct result of the community-based partnerships established within each geographical area, aligning the citizens with officials from contract cities, the schools and County government.



*Captain Juan Rodriguez  
Pico Rivera Station*

### **PICO RIVERA STATION**

Pico Rivera Station provides quality law enforcement service to the City of Pico Rivera and to the unincorporated area of West Whittier. The wide range of services provided to the 97,000 residents are based upon the strong foundation of a community-based policing philosophy.

This philosophy provides appropriate law enforcement services to fit the varied needs of our communities. Our goal is to keep our communities safe, through a pro-active approach to quality-of-life issues, providing prevention, suppression and community involvement through the following programs:

#### **Problem Specific Policing Team**

The Problem Specific Policing Team is an exceptional crime suppression task force as well as a highly skilled investigative force. During the last three years, the team has arrested 2,956 suspects. The team maintains a 95% conviction rate.

#### **Annual Christmas Toy Drive**

Utilizing the assistance of our station volunteers, we solicited toys at the local K-mart and Kay-Bee's toy store. We collected approximately 5,000 toys which we distributed to needy children in our communities. This will also become a yearly event.

#### **Annual Regional Citizen's Community Academy**

Sixty-eight members within the community of Pico Rivera participated in the first Spanish regional citizen's community academy. The program was offered to foster a better understanding between the Spanish-speaking community and the deputies who serve them. The participants were given classroom instruction on various functions within the department, as well as tours of the Custody facilities, Emergency Operations Bureau, the Range and Communications Center. This will become a yearly event.

#### **Community-Oriented Policing Team**

The Community-Oriented Policing Team began operations in February 1998. To date, three High-Impact COPS Projects, all within the unincorporated county area, were successfully completed. Team members completed hundreds of missions involving quality-of-life issues in the community. New office space was constructed, furnished, and equipped with the best available computers and other office equipment. A total of 12 station deputies took part in the COPS program this year.

#### **Motorcycle Traffic Enforcement Team**

The station has three motorcycle officers under contract with the city of Pico Rivera. These officers are responsible for nearly two thirds of all the station's citations.

#### **Volunteers on Patrol**

A group of station volunteers were organized and trained to patrol

within the City of Pico Rivera and the unincorporated areas of the county. These volunteers assist with graffiti identification, business and vacation house watch, as well as park security and many other station functions.

### **SPECIAL ENFORCEMENT BUREAU**

The Special Enforcement Bureau is a Departmental support unit that provides a variety of specialized services throughout the county. The Bureau's current personnel strength consists of 87 sworn and six civilian employees.

#### **Canine Services and Search Detail (CSSD)**

The Canine Services Detail conducts area and building searches utilizing specially trained dogs and handlers. In addition to searching for felony and/or armed suspects, they support the Special Weapons Teams on barricaded suspect call-outs, as well as high-risk warrants. During 1998, they were involved in 626 searches, locating a suspect 84 times.

The Search Dog Detail consists of 20 dogs and their civilian volunteer handlers. The mission of these highly trained teams is to focus on searches for lost or missing persons, homicide victims, and victims of accidents and natural disasters. In addition to searching for humans, the dogs from both the Canine Detail and the Search Detail are used to locate items of evidence. This unit handled 143 searches in 1998.

#### **Emergency Services Detail (ESD)**

The ESD was created more than 30 years ago for the purpose of dealing with difficult and dangerous search and rescue operations in Los Angeles County. The deputies are all certified paramedics whose responsibilities include, helitac/air medevac, underwater search and recovery, underground search and recovery, as well as special weapons team medical support. The detail staffs the air rescue program (Air-5) with two paramedics

and a crew chief. During 1998, they responded to 928 calls for service.

#### **Mounted Enforcement Detail (MED)**

MED consists primarily of volunteer reserve deputies, plus a few regular department personnel who volunteer their time. The detail provides mounted horseback teams to assist stations with crowd control, high visibility patrol, and searches in remote areas. It also provides a mounted color guard at law enforcement officer funerals. The detail was involved in 184 deployments during 1998.

#### **Special Enforcement Detail (SED)**

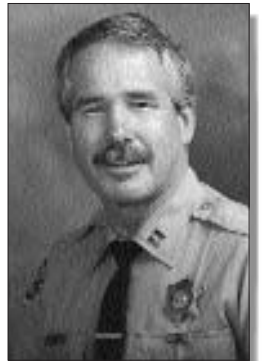
This detail handles high-risk tactical situations involving barricaded suspects, hostage situations, and warrant services. It also provides security for visiting dignitaries and politicians, including the President and Vice President of the United States. Patrol stations and detective units may also call on the detail to provide "mission specific" police services or saturation patrol in problematic areas. During 1998, the detail responded to 218 high-risk tactical operations.

The detail is tasked with a primary goal of saving lives. Their expertise in solving dangerous situations using experience, highly specialized training, and specialized equipment was demonstrated in 1998, via the lack of a single incident requiring the use of firearms to resolve a situation.

SED conducts specialized training schools for both its own members and outside agencies, including Basic and Advanced SWAT and Long Rifle School. Students often include specialized military contingents such as the Navy Seals. In addition, they draw international participation; police officers from Venezuela attended the Basic SWAT school this year.

#### **Special Motorcycle Detail**

The detail assists patrol stations with traffic control and enforcement



*Captain John M. Bauer  
Aero Bureau/  
Special Enforcement Bureau*

at major events and selected problem areas. It is also used in funerals of law enforcement officers for escort and traffic control. The detail's 17 reserve deputies generally use their personally owned motorcycles for these assignments. The detail had 101 assignments this year.

## AERO BUREAU

In 1998, Aero Bureau placed into service three Model MD600N Boeing helicopters. These helicopters will soon be equipped with the latest avionics, including microwave video downlink systems for use in patrol operations, pursuit management and disaster scene coordination. The replacement of the Air-5 Rescue S-58T Sikorsky Helicopters with Sikorsky "Sea-King" helicopters is in process and projected to take place in 4th quarter 1999. These former Navy helicopters were used for antisubmarine military missions. They will be used by the Sheriff's Department for rescue missions in the National Forest, transporting and inserting of special weapon teams, transporting personnel in the event of disasters or civil emergencies, and also for marijuana eradication and removal missions. An additional airplane was acquired in 1998, for use in surveillance missions. This Cessna 210 is currently undergoing modifications to enhance its surveillance capabilities, and it will be placed into service in mid 1999.

### Aero Bureau 1998 Statistics

Aerial Patrol Support Recap	
Forward Looking	
Infrared (FLIR) Searches	1,690
Assistance with Canine Searches	264
Assistance with Vehicle Pursuits	214
Assistance with Foot Pursuits	274
Calls	6,290
Observations	5,878
Details	927

The Bureau, using various types of aircraft, provides a variety of aerial support services. Its responsibilities include investigating violations of Public Utility Code Regulations governing flight of aircraft, and the prosecution of offenders. The Bureau also investigates all fatal or serious aircraft accidents. In addition, the Bureau conducts the following aerial missions:

- ✈ *Aerial patrols of both unincorporated areas and incorporated cities under contract with the County;*
- ✈ *Emergency aerial patrol response through mutual aid to independent cities;*
- ✈ *Search and rescue operations;*
- ✈ *Medical evacuation flights;*
- ✈ *Aerial surveillance and photography;*
- ✈ *Prisoner transportation;*
- ✈ *Aerial command post provision for a field commander during an emergency;*
- ✈ *Missions requiring use of aircraft for the Sheriff and/or other County departments as directed by the Sheriff.*

## WALNUT REGIONAL STATION

Walnut Regional Station is spread over 260 square miles, encompassing the cities of Diamond Bar, San Dimas and Walnut, the unincorporated areas of Rowland Heights, Azusa, Covina, Glendora, La Verne, Claremont and Pomona, as well as the San Gabriel Mountains from Crystal Lake to Mt. Baldy Village. Services are provided

to more than 230,000 residents. Our goal is to keep the communities crime free through a proactive approach to quality-of-life issues and a strong commitment to the philosophy of Community-Oriented Policing.

### Community Academy

In its fifth year, this 13-week program allows members of the community to receive extensive orientation regarding the Sheriff's Department and the criminal justice system. Once again, we have joined with Industry, Norwalk and Lakewood stations to present a regional academy at STARS Center. During 1998, the first Spanish-speaking class was conducted. This class was very successful and future classes are planned.

### Community-Oriented Problem Solving Teams

COPS teams, funded through a federal grant and by individual contract cities, impact multiple neighborhood issues throughout our jurisdiction. These teams target gang and drug involvement, as well as zoning and health concerns, allowing us to address a broad range of problem areas with a limited number of specially trained personnel.

### Specialized Programs and Service Centers

Other crucial community-based programs include the Carrier Alert Program in which Postal carriers make notification regarding untouched mail at residences, the Community Advisory Committee, the Asian Community Liaison Team, and a Web Page which lists services and upcoming events. Neighborhood Service Centers in Walnut and Rowland Heights are open to neighborhood and business groups.

### Volunteers on Patrol

Volunteers patrol our three contract cities and the Roland Heights area, contributing thousands of hours each year. While the volunteer patrols were designed to observe and report crime and suspicious or unusual activity, they also conduct vacation checks, identify graffiti, monitor school and park activities, and check on the welfare of elderly and shut-in residents.

### Youth Athletic League

Community Development Block Grants provide funding to the unincorporated areas of Rowland Heights, Covina and Azusa for the Youth Activities League. This program provides a safe environment in which children can play and study away from the threat of gangs and drugs.



Captain Richard J. Martinez  
Walnut Regional Station