



CUSTODY DIVISION QUARTERLY REPORT

October - December 2017

Los Angeles County Sheriff's Department

Jim McDonnell, Sheriff

TABLE OF CONTENTS

| | |
|---|----|
| Executive Summary..... | 3 |
| 1. Population Trends..... | 5 |
| LA County Inmate Population Graphs | |
| Population Overview | |
| Yearly ADIP Trend | |
| Arrests, Bookings and Releases | |
| Release Practices | |
| Homeless and Veteran | |
| AB109 Split and Non-Split Sentences | |
| 2. Facilities Overview..... | 13 |
| Rated Capacities - Board of State and Community Corrections | |
| Jail Housing Facilities | |
| Men's Central Jail | |
| Twin Towers Correctional Facility | |
| Century Regional Detention Center | |
| Pitchess Detention Center – East | |
| Pitchess Detention Center – North | |
| Pitchess Detention Center – South | |
| North County Correctional Facility | |
| 3. Population Overview..... | 20 |
| Inmate Population Demographics | |
| Inmate Population Offender Age Groups | |
| Classification and Re-Classification | |
| Re-classification Statistics | |
| Inmate Population Breakdown | |
| Crime Classification Statistics | |
| Inmates with M7 | |
| Pre-Trial Population | |
| Pre-Trial Misdemeanor Population | |
| Pre-Trial Bail Holds | |
| Mental Health Inmate Population | |
| Misdemeanor Incompetent to Stand Trial (MIST) | |
| Americans with Disabilities Act (ADA) | |
| Medical Housing | |
| 4. In-Custody Programs..... | 34 |
| Credit Earnings | |
| Conservation Work Program (CWP) | |
| Fire Camp Training Program | |
| CDCR Fire Camp Program | |
| Education Based Incarceration Program (EBI) | |
| Back on Track (BOT) | |
| In-Custody S.T.A.R.T Program | |
| Program Credit Earning Chart | |

5. Alternatives to Custody Programs.....39
Community Transition Unit (CTU)
Substance Abuse Treatment and Reentry Transition (S.T.A.R.T)
Tarzana Treatment Center DMH/SUD Program
Mental Health Diversion – Normandie Village/Gateway
Community Based Alternatives to Custody (CBAC)

6. Re-Entry Assistance.....43
Affordable Care Act (ACA)
Community Re-Entry and Resource Center (CRRC)
CTU Coordinated Releases to Various Programs
CTU Vital Records

EXECUTIVE SUMMARY

The Los Angeles County Sheriff's Department (LASD) is committed to maintaining a secure and constitutional jail system. As part of this effort, a periodic report is essential to better understand and quantify population trends. This ***Custody Division Quarterly Report*** reports data collected during the Fourth Quarter of 2017, and is produced by the Population Management Bureau (PMB) Analysis Unit.

The average daily inmate population (ADIP) during the fourth quarter of 2017 was 17,408. This number includes approximately 323 inmates participating in community-based alternatives to custody programs. This is slightly less than the third quarter of 2017 ADIP average of 17,678, including approximately 374 who participated in the community-based alternative to custody programs (ATC). During the fourth quarter of 2016, the ADIP was 16,942, including 534 inmates participating in community-based alternatives to custody programs.

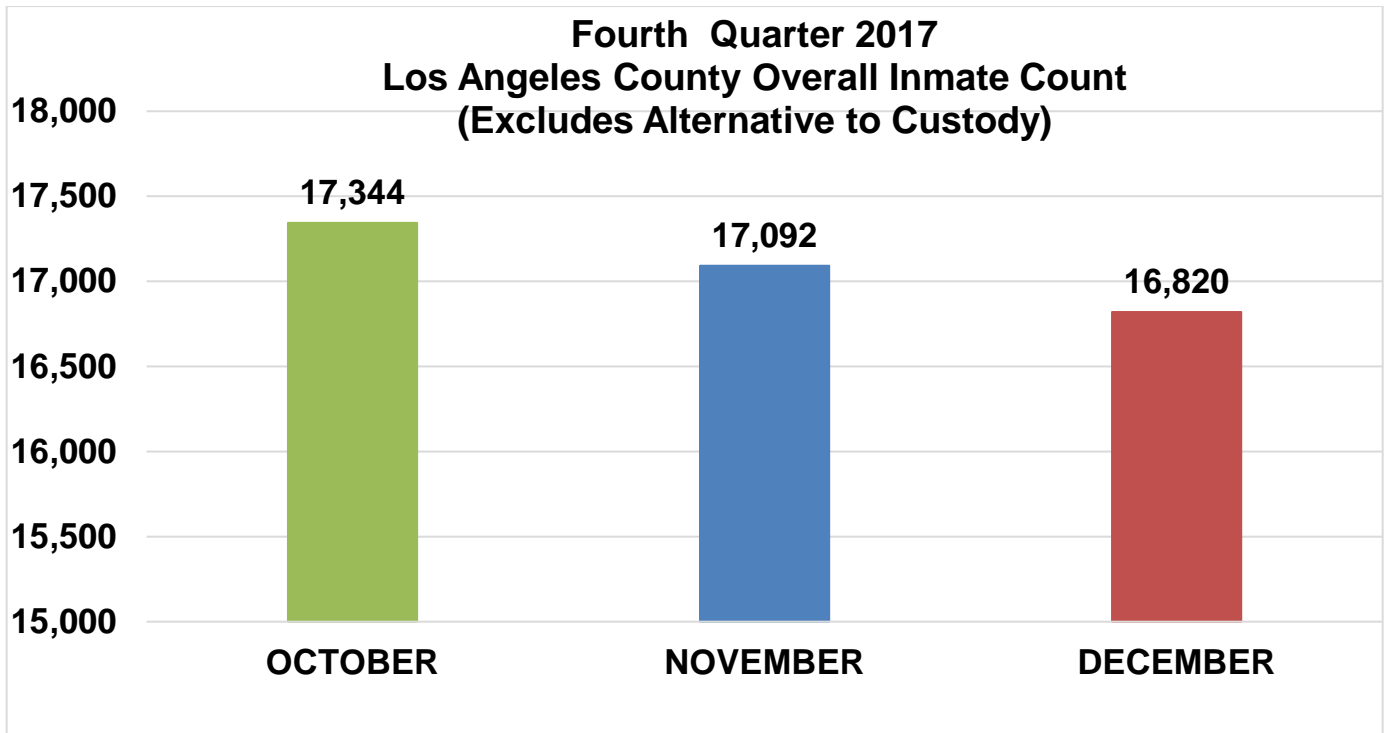
As discussed in our third quarter report, on July 1, 2017, the funding source for County funded residential substance abuse treatment programs was changed to Medi-Cal. Previously, our ATC program was paid for through a different funding source. Medi-Cal funding only covers up to 90 days of residential treatment and is restricted to Medi-Cal eligible participants who have a proven "medical necessity" for residential treatment via the American Society of Addiction Medicine (ASAM) assessment. These changes have made it even more challenging to find qualified inmates who meet both the existing criteria LASD and the new Medi-Cal requirements for ATC programs and is one reason that our ATC ADIP is nearly 200 participants lower than it was in the same quarter 2016. An additional reason for the low ATC ADIP is the continued use of percentage release (discussed below). Inmates who in the past would have been good candidates for ATC programs such as Work Release, are now immediately released "time served" and therefore do not participate in programming. For additional information regarding ATC programs see page 41 of this report.

Over-crowding has necessitated the continued use of percentage release during this reporting period. Inmates serving traditional county sentences completed 10 percent of their court ordered sentence. Inmates who were serving sentences for designated serious and/or violent offences (M7 charges) and those sentenced under 1170 PC continued to serve 100 percent of their sentences, minus any time credits earned. The release percentage for the same time period in 2016 was 30 percent for both males and females. This quarter inmates who received short sentences of 180 days or less were immediately processed for release and served no additional jail time. In 2016, only those sentenced to 120 days or less were considered "shorts." For further information regarding this quarter's percentage release criteria see page 10 of this report.

In early 2017, LASD began compiling reports on the number of inmates who identified themselves as being homeless and/or veterans of the United States military and publishing these statistics in our Quarterly Reports. In December 2017, PMB discovered a software reporting error that had resulted in the under reporting of homeless inmates housed in the jail system. The error has been rectified and the Quarterly Reports for 2017 have been amended to reflect the corrected counts. During this quarter, on average there were 2,150 inmates who answered “yes” to the question “Are you homeless?” in the jail system at any given time. For further information see page 11 of this report.

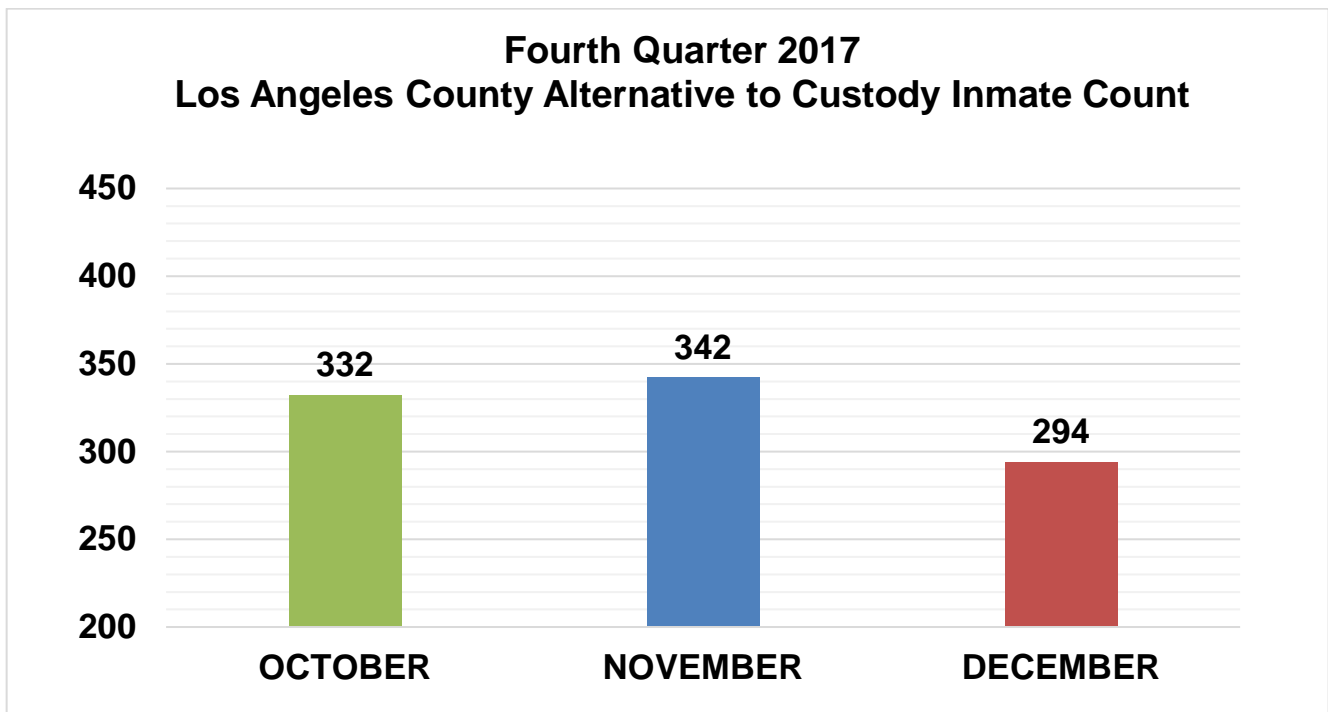
POPULATION TRENDS

LA COUNTY INMATE POPULATION



| |
|---|
| 2017 Quarterly Overall Division ADIP |
| 17,085 |

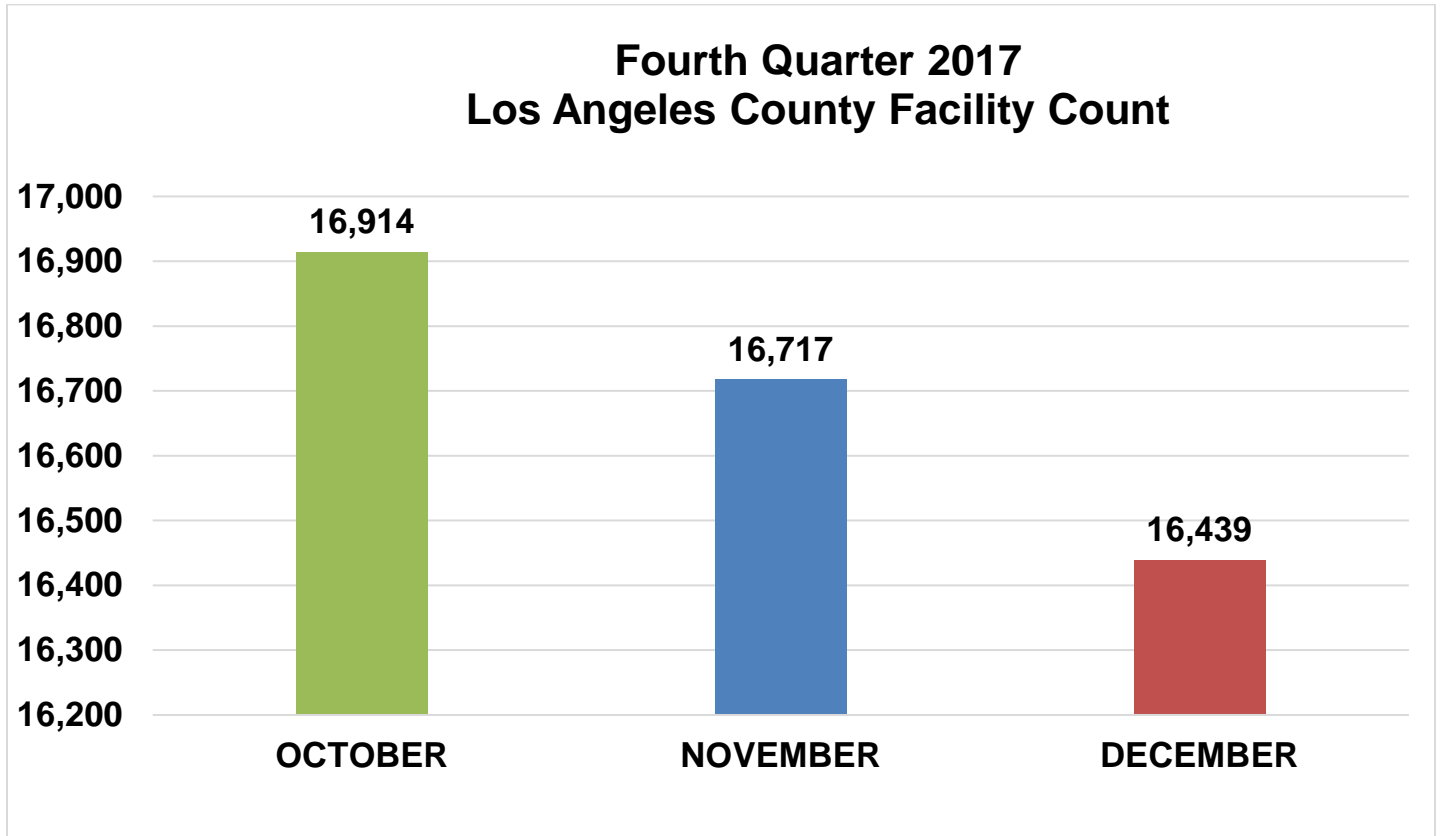
Quarterly Division ADIP will differ from Quarterly Facility ADIP due to the inclusion of Inmates processing into IRC.



| |
|------------------------------------|
| 2017 Quarterly ATC ADIP |
| 323 |

POPULATION OVERVIEW

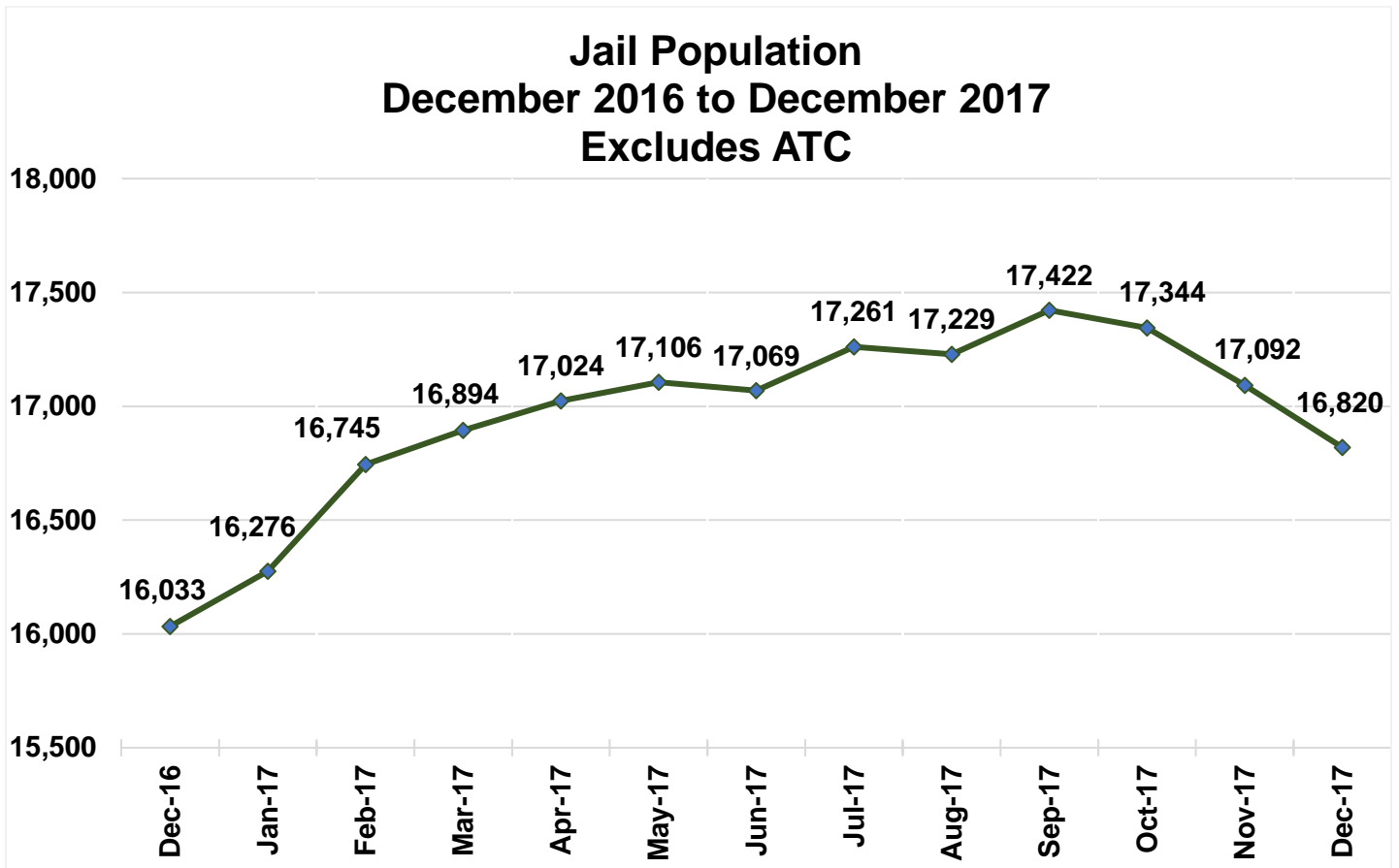
The inmate population within the County jail system had a slight decrease for this fourth quarter of 2017.



| 2017 Quarterly Custody Facility ADIP |
|---|
| 16,690 |

Facility Jail Count reflects all inmates housed in a LA County jail bed for the quarter. Excludes ATC and IRC.

Yearly ADIP Trend



| Seven Year ADIP Comparison | | |
|----------------------------|--------|-----------------------|
| Year | ADIP | Notes |
| 2011 | 15,014 | (Oct - AB109 enacted) |
| 2012 | 18,043 | |
| 2013 | 18,687 | |
| 2014 | 18,680 | (Nov - Prop 47) |
| 2015 | 17,049 | |
| 2016 | 16,613 | |
| 2017 | 17,024 | |

FOURTH QUARTER 2017 - ARREST AND BOOKING STATS

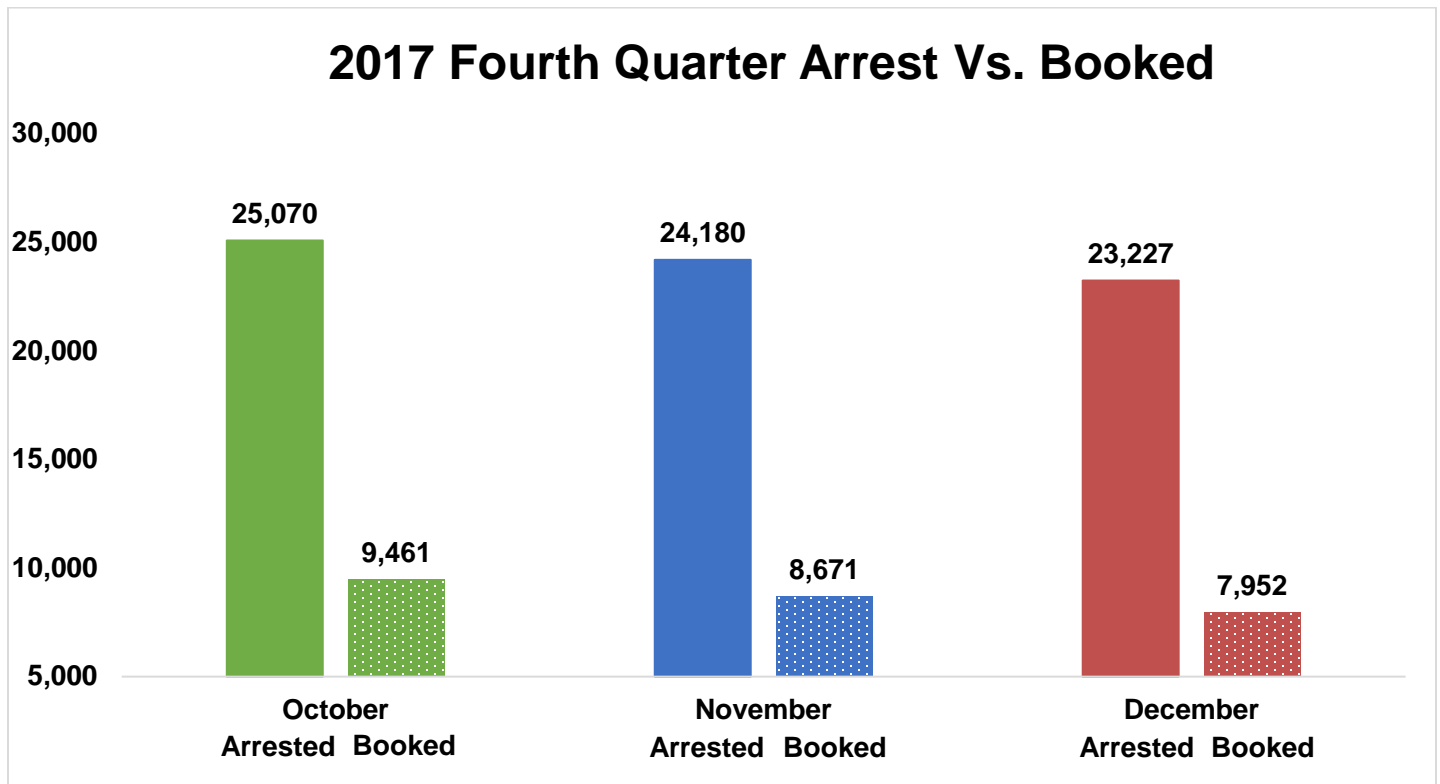
Arrest activity decreased by 9% over last quarter. The number of inmates booked into the LA County jail this quarter was decreased by 11% over last quarter's number of inmates booked into custody (29,365).

| | October | | November | | December | | Quarterly Total | Quarterly Average | Quarterly % |
|------------------------------------|---------------|------------|---------------|------------|---------------|------------|-----------------|-------------------|-------------|
| | Monthly Total | % | Monthly Total | % | Monthly Total | % | | | |
| Felony | 9,139 | 36% | 8,860 | 37% | 8,324 | 36% | 26,323 | 8,774 | 36% |
| Misdemeanor | 14,814 | 59% | 14,332 | 59% | 13,948 | 60% | 43,094 | 14,365 | 60% |
| Juvenile - non criminal | 55 | 0% | 64 | 0% | 43 | 0% | 162 | 54 | 0% |
| Other | 1,062 | 4% | 924 | 4% | 912 | 4% | 2,898 | 966 | 4% |
| Total Arrested | 25,070 | | 24,180 | | 23,227 | | 72,477 | 24,159 | |
| Total Booked into LA County | 9,461 | 38% | 8,671 | 36% | 7,952 | 34% | 26,084 | 8,695 | 36% |

Previously, data was generated from the Custody Inmate Portal (CIP) to determine how many inmates were booked and arrested, which only used the first charge (excluding all other charges) to determine the charge level. Beginning this year, we query and categorize all charges by the highest charge level to provide more accurate data.

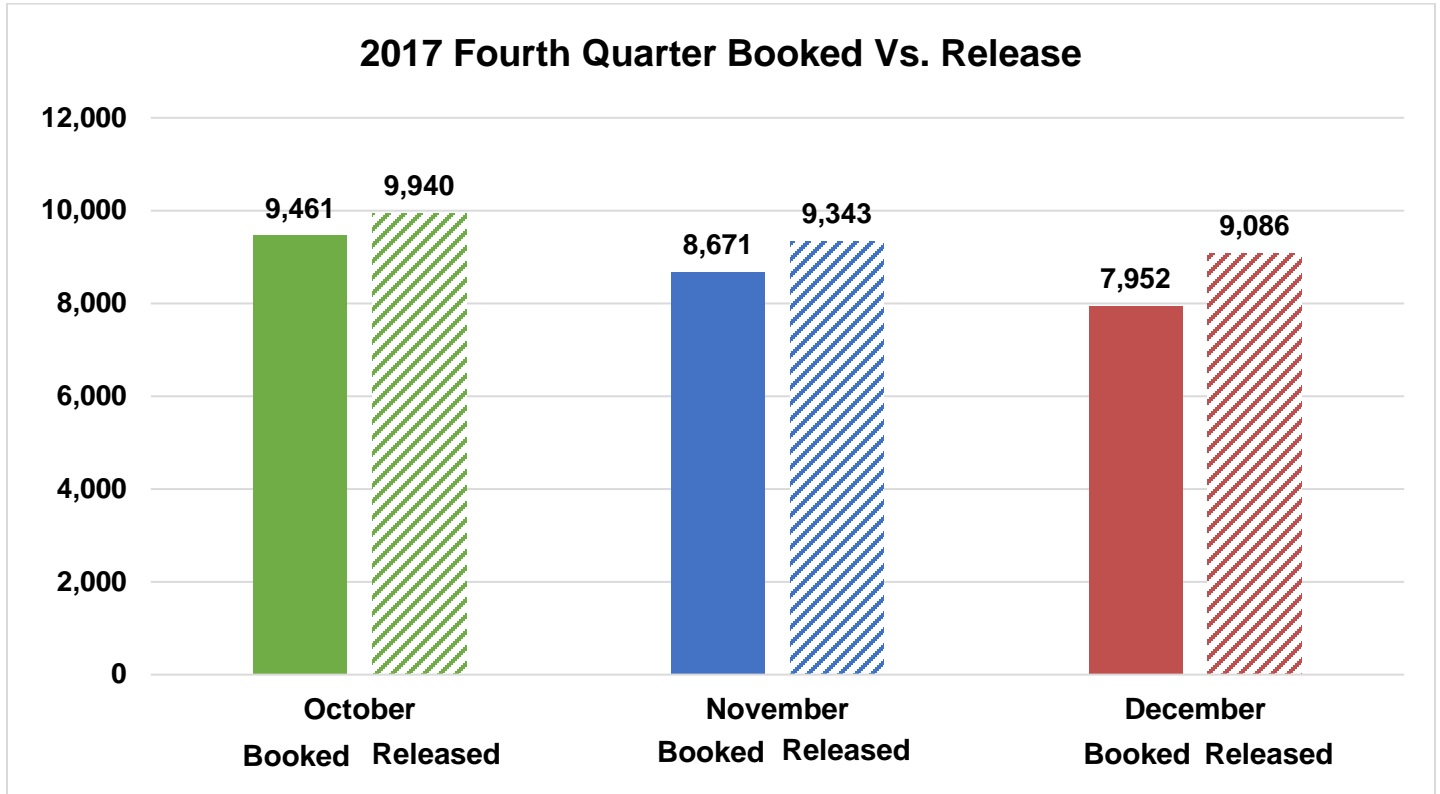
FOURTH QUARTER 2017 - ARRESTS VS. BOOKINGS

The graph below compares the average Arrests and Bookings for this quarter.



FOURTH QUARTER 2017 – BOOKINGS VS. RELEASES

LASD averaged approximately 9,456 releases this quarter. This is a decrease of approximately 757 releases compared to last quarter (average of 10,213).



LA COUNTY JAIL RELEASE PRACTICES

Due to conditions of overcrowding, during this quarter traditional county sentenced inmates were subject to early release under the following conditions.

| Month | Release Criteria Male | Release Criteria Female | *M7 Release Criteria | **Short Sentence Male | **Short Sentence Female |
|----------|-----------------------|-------------------------|----------------------|-----------------------|-------------------------|
| October | 10% | 10% | 100% | 180 days | 180 days |
| November | 10% | 10% | 100% | 180 days | 180 days |
| December | 10% | 10% | 100% | 180 days | 180 days |

*M7 are inmates who have designated serious and/or violent offences are classified as M7, which requires their record jacket go through extra 'security' checks upon release from Sheriff's custody.

**Shorts are inmates who are sentenced to a term in county jail, which after all legal credits are awarded and the current jail percentage time is considered, are immediately released from Sheriff's custody after processing from court.

HOMELESS AND VETERAN

Homeless Population

The chart below provides an average breakdown of the inmate population who stated they were homeless by gender, major race and age category.

| | October | November | December | TOTAL | AVERAGE |
|--------------|--------------|--------------|--------------|--------------|--------------|
| Male | 2,043 | 1,842 | 1,652 | 5,537 | 1,846 |
| Female | 272 | 337 | 304 | 913 | 304 |
| Total | 2,315 | 2,179 | 1,956 | 6,450 | 2,150 |

| | October | November | December | TOTAL | AVERAGE |
|--------------|--------------|--------------|--------------|--------------|--------------|
| Hispanic | 1,044 | 972 | 902 | 2,918 | 973 |
| Black | 657 | 636 | 533 | 1,826 | 608 |
| White | 534 | 507 | 455 | 1,496 | 499 |
| Other | 80 | 64 | 66 | 210 | 70 |
| Total | 2,315 | 2,179 | 1,956 | 6,450 | 2,150 |

| | October | November | December | TOTAL | AVERAGE |
|--------------|--------------|--------------|--------------|--------------|--------------|
| 18 to 25 | 425 | 371 | 278 | 1,074 | 358 |
| 26 to 34 | 779 | 713 | 662 | 2,154 | 718 |
| 35 to 39 | 296 | 324 | 298 | 918 | 306 |
| 40 to 44 | 223 | 224 | 198 | 645 | 215 |
| 45 & Older | 592 | 547 | 520 | 1,659 | 553 |
| Total | 2,315 | 2,179 | 1,956 | 6,450 | 2,150 |

**In December 2017, PMB discovered a software reporting error that had resulted in the under reporting of homeless inmates housed in the jail system. The error has been rectified and the counts for 2017 have been amended.*

Veteran Population

The chart below provides an average breakdown of the inmate population who stated they have served in the United State Military by gender, major race and age category.*

| | October | November | December | TOTAL | AVERAGE |
|--------------|------------|------------|------------|------------|------------|
| Male | 202 | 199 | 207 | 608 | 203 |
| Female | 1 | 1 | 1 | 3 | 1 |
| Total | 203 | 200 | 208 | 611 | 204 |

| | October | November | December | TOTAL | AVERAGE |
|--------------|------------|------------|------------|------------|------------|
| Hispanic | 54 | 58 | 57 | 169 | 56 |
| Black | 74 | 70 | 79 | 223 | 75 |
| White | 63 | 62 | 65 | 190 | 63 |
| Other | 12 | 11 | 8 | 31 | 10 |
| Total | 203 | 200 | 208 | 611 | 204 |

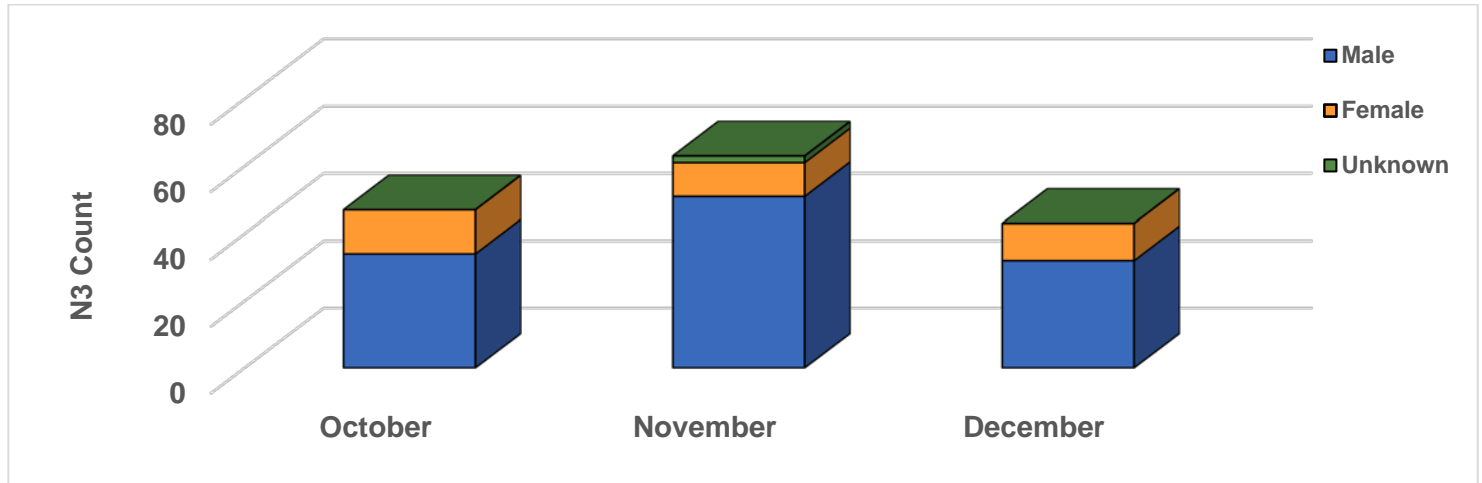
| | October | November | December | TOTAL | AVERAGE |
|--------------|------------|------------|------------|------------|------------|
| 18 to 25 | 11 | 8 | 9 | 28 | 9 |
| 26 to 34 | 40 | 43 | 39 | 122 | 41 |
| 35 to 39 | 29 | 31 | 30 | 90 | 30 |
| 40 to 44 | 13 | 15 | 17 | 45 | 15 |
| 45 & Older | 111 | 104 | 113 | 328 | 109 |
| Total | 203 | 200 | 208 | 611 | 204 |

**These are numbers based upon self-identification and have not been confirmed by the Veterans Administration.*

AB109 Split and Non Split Sentence

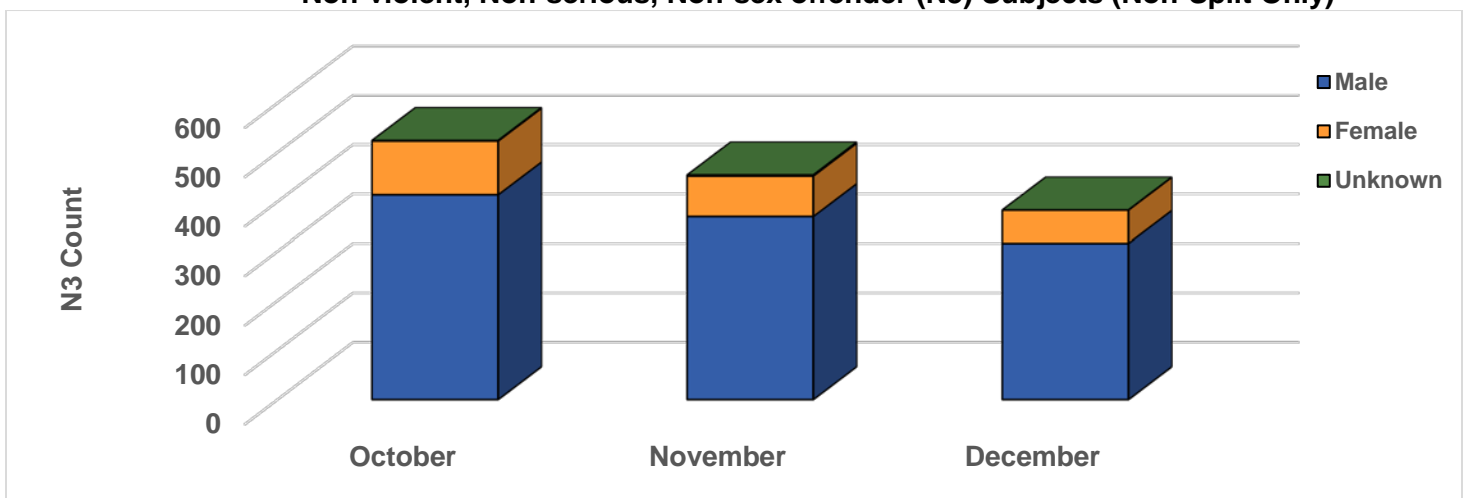
Under AB109, judges can impose a “split sentence” when sentencing a convicted defendant to time in jail. A split sentence requires a portion of the sentence served in custody, and a portion of the sentence served under supervision of the probation department in the community. The Split Sentence option in sentencing results in a shorter stay for inmates.

**Non-violent, Non-serious, Non-sex offender (N3) Subjects (Split Only)
October 2017 to December 2017**



| | October | November | December | Average |
|----------------|-----------|-----------|-----------|-----------|
| Male | 34 | 51 | 32 | 39 |
| Female | 13 | 10 | 11 | 11 |
| Unknown | 0 | 2 | 0 | 1 |
| Summary | 47 | 63 | 43 | 51 |

Non-violent, Non-serious, Non-sex offender (N3) Subjects (Non-Split Only)



| | October | November | December | Average |
|----------------|------------|------------|------------|------------|
| Male | 414 | 370 | 316 | 367 |
| Female | 109 | 82 | 67 | 86 |
| Unknown | 1 | 2 | 0 | 1 |
| Summary | 524 | 454 | 383 | 454 |

*Data queried by Probation from ISAB-JAIMS system.

FACILITIES OVERVIEW

RATED CAPACITY

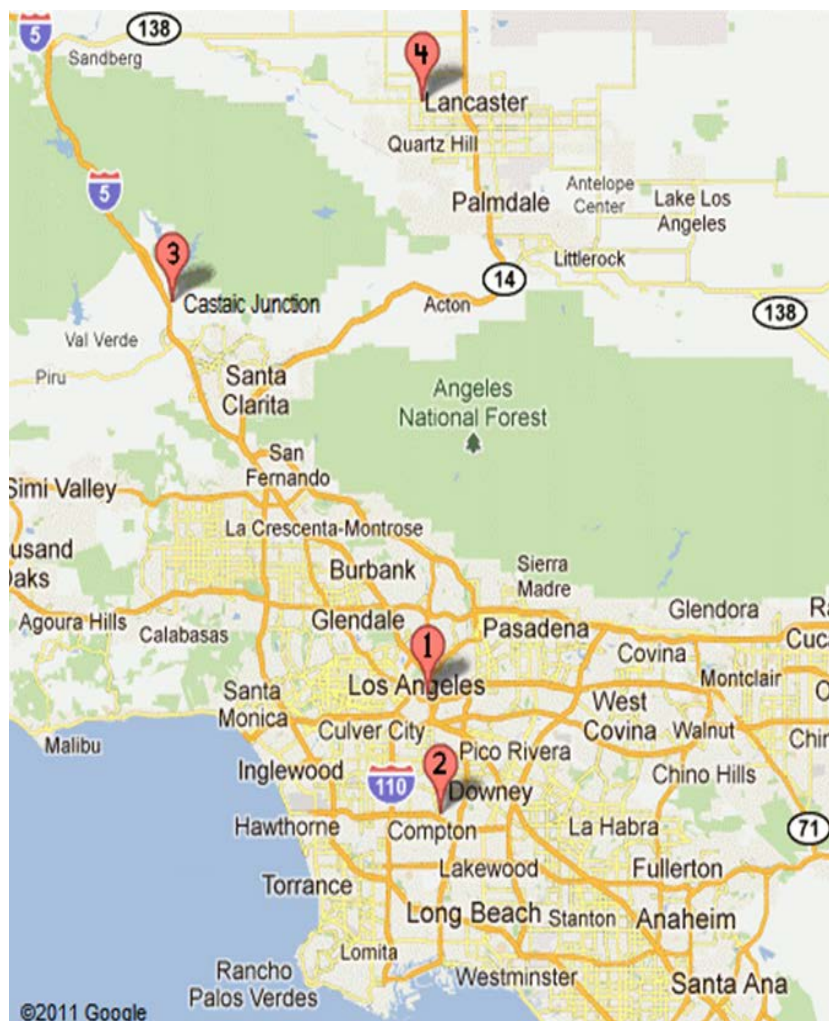
The Board of State and Community Corrections (BSCC) is a government body which recommends capacity limits for county jails. BSCC conducts biennial jail inspections; LASD was rated in April 2016.

| Board of State and Community Corrections | | | | |
|---|---------------------|-------------------------|---------------------------|-----------------|
| LASD Custody Facilities | BSCC Rated Capacity | Quarterly Facility ADIP | Above BSCC Rated Capacity | % BSCC Capacity |
| Men's Central Jail | 3,529 | 4,261 | 732 | 121% |
| Twin Towers Correctional Facility | 2,484 | 3,528 | 1,044 | 142% |
| Century Regional Detention Facility | 1,708 | 2,120 | 412 | 124% |
| Pitchess Detention Center – East | 926 | 71 | -855 | 8% |
| Pitchess Detention Center – North | 832 | 1,443 | 611 | 173% |
| Pitchess Detention Center – South | 844 | 1,325 | 481 | 157% |
| North County Correctional Facility | 2,214 | 3,941 | 1,727 | 178% |

| Total BSCC Rated Capacity* | Quarterly Facility ADIP | Total Above BSCC Rated Capacity | Total % BSCC Capacity | Total % BSCC Capacity Excluding East Facility |
|----------------------------|-------------------------|---------------------------------|-----------------------|---|
| 12,537 | 16,690 | 4,153 | 133% | 143% |

*Statistical data gathered from *Board of State and Community Corrections Inspection Report 11/2016*.

**The facility ADIP does not include the IRC and ATC populations.



LA County Jail Facilities

1

- Men's Central Jail (MCJ)
- Twin Towers Correctional Facility (TTCF)
- Los Angeles County Medical Center (LCMC)
- Correctional Treatment Center (CTC)
- Inmate Reception Center (IRC)

2

- Century Regional Detention Facility (CRDF)

3

- Pitchess Detention Center (PDC)
- PDC East Facility
- PDC North Facility
- PDC South Facility
- North County Correctional Facility (NCCF)

4

- Mira Loma Detention Center (MLDC)

JAIL HOUSING FACILITIES

| MEN'S CENTRAL JAIL TOTAL INMATE POPULATION | | | | | |
|---|----------------|-----------------|-----------------|------------------------------|----------------------------|
| SECURITY LEVEL | OCTOBER | NOVEMBER | DECEMBER | QUARTERLY AVERAGE | % OF POPULATION |
| Security Level Low 1-4 | 1,050 | 1,001 | 928 | 993 | 23% |
| Security Level Medium 5-7 | 2,434 | 2,454 | 2,486 | 2,458 | 58% |
| Security Level Low High 8-9 | 787 | 827 | 814 | 809 | 19% |
| FACILITY TOTAL | 4,271 | 4,282 | 4,228 | 4,260 | 100% |
| °SUB POPULATION HOUSED THROUGHOUT FACILITY | | | | | |
| HOUSING TYPE | OCTOBER | NOVEMBER | DECEMBER | QUARTERLY AVERAGE | |
| *Administratively Segregated Inmates (K-10) | 295 | 301 | 279 | 292 | |
| > Administratively Segregated Inmates (K-1) | 13 | 11 | 11 | 12 | |
| **Discipline | 38 | 41 | 34 | 38 | |
| General Population on Psychotropic Meds | 731 | 690 | 690 | 704 | |
| Inmate Workers | 959 | 962 | 928 | 950 | |
| LGBT (K-6 G) Inmates | 364 | 377 | 373 | 371 | |
| Medical/Clinic | 366 | 352 | 345 | 354 | |
| ^Other (K-6T/B/C) | 155 | 148 | 150 | 151 | |
| Pro-Per | 84 | 85 | 86 | 85 | |
| School Housing (EBI) | 440 | 428 | 438 | 435 | |
| Sexually Violent Predators | 11 | 10 | 9 | 10 | |
| Sex Crimes Against Children (K-6 Y) Inmates | 257 | 253 | 242 | 251 | |

°Sub population housed throughout facility includes those who are classified with special housing needs and are included in the total inmate population. An inmate may belong to more than one subpopulation.

*K-10-Administratively segregated for various reasons including danger to self or others.

>K-1 Law Enforcement related in custody.

^ K-6T Contempt of court, K6B threatened by others, K-6C protective custody.

**Majority of discipline inmates are now housed at TTCF.

**TWIN TOWERS CORRECTIONAL FACILITY
TOTAL INMATE POPULATION**

| SECURITY LEVEL | OCTOBER | NOVEMBER | DECEMBER | QUARTERLY AVERAGE | % OF POPULATION |
|---------------------------|----------------|-----------------|-----------------|--------------------------|------------------------|
| SECURITY LEVEL LOW 1-4 | 739 | 723 | 726 | 729 | 21% |
| SECURITY LEVEL MEDIUM 5-7 | 2,265 | 2,280 | 2,284 | 2,276 | 64% |
| SECURITY LEVEL HIGH 8-9 | 509 | 536 | 503 | 516 | 15% |
| FACILITY TOTAL | 3,513 | 3,539 | 3,513 | 3,521 | 100% |

°SUB POPULATION HOUSED THROUGHOUT FACILITY

| HOUSING TYPE | OCTOBER | NOVEMBER | DECEMBER | QUARTERLY AVERAGE |
|---|----------------|-----------------|-----------------|--------------------------|
| ADMINISTRATIVELY SEGREGATED (K-10) | 139 | 141 | 143 | 141 |
| ADMINISTRATIVELY SEGREGATED INMATES (K-1) | 2 | 3 | 4 | 3 |
| ADMINISTRATIVELY SEGREGATED INMATES (K-6B) | 50 | 50 | 52 | 51 |
| AMERICAN'S WITH DISABILITIES (ADA) | 354 | 351 | 342 | 349 |
| DEVELOPMENTALLY DISABLED | 27 | 27 | 25 | 26 |
| DISCIPLINE | 75 | 61 | 57 | 64 |
| FEMALE GENERAL POPULATION | 175 | 167 | 169 | 170 |
| FEMALE MEDICAL (CTC) | 20 | 18 | 19 | 19 |
| FEMALE SCHOOL HOUSING (EBI) | 103 | 99 | 100 | 101 |
| FEMALE WORKERS | 49 | 46 | 48 | 48 |
| GENERAL POPULATION ON PSYCHOTROPIC MEDS SECURITY LEVEL 1-4 | 43 | 39 | 44 | 42 |
| GENERAL POPULATION ON PSYCHOTROPIC MEDS SECURITY LEVEL 5-7 | 199 | 203 | 186 | 196 |
| GENERAL POPULATION ON PSYCHOTROPIC MEDS SECURITY LEVEL 8-9 | 60 | 61 | 61 | 61 |
| INMATE WORKERS | 0 | 0 | 0 | 0 |
| LGBT (K-6 G) INMATES | 96 | 89 | 83 | 89 |
| MALE SCHOOL HOUSING (EBI) | 407 | 461 | 476 | 448 |
| MEDICAL (CTC) | 105 | 110 | 113 | 109 |
| MENTALLY ILL - HIGH OBSERVATION HOUSING (HOH) | 849 | 886 | 931 | 889 |
| MENTALLY ILL - (MOH)/ SERVICE AREA | 2,232 | 2,310 | 2,394 | 2,312 |
| MENTALLY ILL - MODERATE OBSERVATION HOUSING (MOH) SCHOOL HOUSING (EBI) | 407 | 461 | 476 | 448 |
| MENTALLY ILL - MODERATE OBSERVATION HOUSING (MOH) SEX CRIMES AGAINST CHILDREN (K-6 Y) INMATES | 136 | 135 | 139 | 137 |

°Sub population housed throughout facility includes those who are classified with special housing needs and are included in the total inmate population.

An inmate may belong to more than one subpopulation.

***K-10-Administratively segregated for various reasons including danger to self or others.**

****K-6B-Administratively segregated are at risk of assault in GP housing.**

^Related to Law Enforcement-segregated from general population for safety reasons.

***** Inmate workers moved to MCJ because of ADA construction project in T271.**

****** ADA extended program therefore more participants beginning October, 2017.**

******* EBI extended MOH program therefore more participants beginning October, 2017.**

**CENTURY REGIONAL DETENTION CENTER
TOTAL INMATE POPULATION**

| SECURITY LEVEL | OCTOBER | NOVEMBER | DECEMBER | QUARTERLY AVERAGE | % OF POPULATION |
|---------------------------|----------------|-----------------|-----------------|--------------------------|------------------------|
| SECURITY LEVEL LOW 1-4 | 687 | 691 | 661 | 680 | 32% |
| SECURITY LEVEL MEDIUM 5-7 | 1,182 | 1,160 | 1,153 | 1,165 | 55% |
| SECURITY LEVEL HIGH 8-9 | 278 | 275 | 270 | 274 | 13% |
| FACILITY TOTAL | 2,147 | 2,126 | 2,084 | 2,119 | 100% |

°SUB POPULATION HOUSED THROUGHOUT FACILITY

| HOUSING TYPE | OCTOBER | NOVEMBER | DECEMBER | QUARTERLY AVERAGE |
|---|----------------|-----------------|-----------------|--------------------------|
| ADMINISTRATIVE SEGRAGATED INMATES (K-10) | 46 | 51 | 48 | 48 |
| DISCIPLINE | 25 | 22 | 26 | 24 |
| INMATE WORKERS | 338 | 333 | 324 | 332 |
| MEDICAL/CLINIC | 4 | 10 | 12 | 9 |
| MENTALLY ILL - HIGH OBSERVATION HOUSING (HOH) | 295 | 311 | 290 | 299 |
| MENTALLY ILL - MODERATE OBSERVATION HOUSING (MOH) | 292 | 283 | 282 | 286 |
| OTHER (K-6B) | 7 | 10 | 9 | 9 |
| SCHOOL HOUSING (EBI) | 517 | 518 | 515 | 517 |
| SEX CRIMES AGAINST CHILDREN (K-6 Y) INMATES | 7 | 5 | 7 | 6 |

°Sub population housed throughout facility includes those who are classified with special housing needs and are included in the total inmate population.

An inmate may belong to more than one subpopulation.

^K-10-Administratively segregated for various reasons including danger to self or others.

**PITCHESS DETENTION CENTER – EAST FACILITY
TOTAL INMATE POPULATION**

| SECURITY LEVEL | OCTOBER | NOVEMBER | DECEMBER | QUARTERLY AVERAGE | % OF POPULATION |
|-----------------------------|-----------|-----------|-----------|-------------------|-----------------|
| SECURITY LEVEL LOW 1-4 | 59 | 55 | 56 | 57 | 80% |
| SECURITY LEVEL LOW 5-7 | 14 | 14 | 16 | 15 | 20% |
| SECURITY LEVEL LOW 8-9 | 0 | 0 | 0 | 0 | 0% |
| TOTAL FACILITY TOTAL | 73 | 69 | 72 | 72 | 100% |

°SUB POPULATION HOUSED THROUGHOUT FACILITY

| HOUSING TYPE | OCTOBER | NOVEMBER | DECEMBER | QUARTERLY AVERAGE |
|-------------------------------|---------|----------|----------|-------------------|
| FIRE CAMP SECURITY LEVELS 1-4 | 59 | 55 | 56 | 57 |
| FIRE CAMP SECURITY LEVELS 5-7 | 14 | 14 | 16 | 15 |

°Sub population housed throughout facility includes those who are classified with special housing needs and are included in the total inmate population. An inmate may belong to more than one subpopulation.

**PITCHESS DETENTION CENTER – NORTH
TOTAL INMATE POPULATION**

| SECURITY LEVEL | OCTOBER | NOVEMBER | DECEMBER | QUARTERLY AVERAGE | % OF POPULATION |
|---------------------------|--------------|--------------|--------------|-------------------|-----------------|
| SECURITY LEVEL LOW 1-4 | 274 | 266 | 262 | 267 | 19% |
| SECURITY LEVEL MEDIUM 5-7 | 1,125 | 1,117 | 1,134 | 1,125 | 78% |
| SECURITY LEVEL HIGH 8-9 | 46 | 51 | 53 | 50 | 3% |
| FACILITY TOTAL | 1,445 | 1,434 | 1,449 | 1,442 | 100% |

°SUB POPULATION HOUSED THROUGHOUT FACILITY

| HOUSING TYPE | OCTOBER | NOVEMBER | DECEMBER | QUARTERLY AVERAGE |
|--|---------|----------|----------|-------------------|
| DISCIPLINE | 27 | 25 | 28 | 27 |
| INMATE WORKERS | 88 | 90 | 91 | 90 |
| SCHOOL HOUSING GP (EBI) SECURITY LEVELS 1-7 | 284 | 279 | 281 | 281 |
| SCHOOL HOUSING (EBI) SECURITY LEVELS 1-7 K6Y | 95 | 94 | 95 | 95 |
| SEX CRIMES AGAINST CHILDREN INMATES (K-6 Y) SECURITY LEVEL 1-7 | 283 | 281 | 284 | 283 |
| MENTALLY ILL - MODERATE OBSERVATION HOUSING (MOH) | 295 | 294 | 303 | 297 |

°Sub population housed throughout facility includes those who are classified with special housing needs and are included in the total inmate population.

An inmate may belong to more than one subpopulation.

♦Inmates housed at North Facility for disciplinary reasons.

**PITCHESS DETENTION CENTER - SOUTH
TOTAL INMATE POPULATION**

| SECURITY LEVEL | OCTOBER | NOVEMBER | DECEMBER | QUARTERLY AVERAGE | % OF POPULATION |
|---------------------------|--------------|--------------|--------------|-------------------|-----------------|
| SECURITY LEVEL LOW 1-4 | 632 | 629 | 599 | 620 | 47% |
| SECURITY LEVEL MEDIUM 5-7 | 716 | 698 | 702 | 705 | 53% |
| SECURITY LEVEL HIGH 8-9 | 0 | 0 | 0 | 0 | 0% |
| FACILITY TOTAL | 1,348 | 1,327 | 1,301 | 1,325 | 100% |

°SUB POPULATION HOUSED THROUGHOUT FACILITY

| HOUSING TYPE | OCTOBER | NOVEMBER | DECEMBER | QUARTERLY AVERAGE |
|---|---------|----------|----------|-------------------|
| BACK ON TRACK SECURITY LEVEL 1-7 | 65 | 59 | 57 | 60 |
| SCHOOL HOUSING (EBI) SECURITY LEVEL 1-7 | 342 | 271 | 329 | 314 |
| INMATE WORKERS SECURITY LEVEL 1-7 | 506 | 501 | 492 | 500 |

°Sub population housed throughout facility includes those who are classified with special housing needs and are included in the total inmate population. An inmate may belong to more than one subpopulation.

**NORTH COUNTY CORRECTIONAL FACILITY
TOTAL INMATE POPULATION**

| SECURITY LEVEL | OCTOBER | NOVEMBER | DECEMBER | QUARTERLY AVERAGE | % OF POPULATION |
|---------------------------|--------------|--------------|--------------|-------------------|-----------------|
| SECURITY LEVEL LOW 1-4 | 701 | 718 | 712 | 710 | 18% |
| SECURITY LEVEL MEDIUM 5-7 | 2,310 | 2,183 | 2,125 | 2,206 | 56% |
| SECURITY LEVEL HIGH 8-9 | 1,092 | 1,031 | 948 | 1,024 | 26% |
| FACILITY TOTAL | 4,103 | 3,932 | 3,785 | 3,940 | 100% |

°SUB POPULATION HOUSED THROUGHOUT FACILITY

| HOUSING TYPE | OCTOBER | NOVEMBER | DECEMBER | QUARTERLY AVERAGE |
|---|---------|----------|----------|-------------------|
| ADMINISTRATIVELY SEGREGATED INMATES (K-10) SECURITY LEVEL 1-8 | 2 | 1 | 1 | 1 |
| ADMINISTRATIVELY SEGREGATED INMATES (K-6B) SECURITY LEVEL 1-8 | 117 | 110 | 102 | 110 |
| DISCIPLINE SECURITY LEVEL 1-7 | 172 | 186 | 172 | 177 |
| INMATE WORKERS SECURITY LEVEL 1-7 | 729 | 759 | 733 | 740 |
| MEDICAL/CLINIC SECURITY LEVEL 5-7 | 8 | 11 | 8 | 9 |
| SCHOOL HOUSING (EBI) SECURITY LEVEL 1-8 | 173 | 135 | 133 | 147 |
| SCHOOL HOUSING (EBI) VETERAN SECURITY LEVEL 1-8 | 58 | 52 | 54 | 55 |

°Sub population housed throughout facility includes those who are classified with special housing needs and are included in the total inmate population.

An inmate may belong to more than one subpopulation.

**K-10-Administratively segregated for various reasons including danger to self or others.*

POPULATION OVERVIEW

INMATE POPULATION DEMOGRAPHICS

Racial demographics this quarter indicate the three most populous racial groups within the LA County Jail for both male and female offenders are Hispanic (51%), Black (30%), and White (15%).

| COMBINED | October 2017 | | November 2017 | | December 2017 | | Quarterly Average | Quarterly % |
|-------------------|---------------|-------------|---------------|-------------|---------------|-------------|-------------------|-------------|
| | Race | Population | % | Population | % | Population | | |
| Hispanic | 8,849 | 51% | 8,717 | 51% | 8,518 | 51% | 8,695 | 51% |
| Black | 5,130 | 30% | 5,068 | 30% | 5,041 | 30% | 5,080 | 30% |
| White | 2,670 | 15% | 2,632 | 15% | 2,572 | 15% | 2,625 | 15% |
| All Others | 593 | 3% | 610 | 4% | 611 | 4% | 605 | 4% |
| Chinese | 28 | 0% | 29 | 0% | 31 | 0% | 29 | 0% |
| Filipino | 29 | 0% | 25 | 0% | 20 | 0% | 25 | 0% |
| Pacific Islanders | 14 | 0% | 14 | 0% | 19 | 0% | 16 | 0% |
| Japanese | 5 | 0% | 3 | 0% | 3 | 0% | 3 | 0% |
| American Indian | 6 | 0% | 5 | 0% | 4 | 0% | 5 | 0% |
| Total | 17,324 | 100% | 17,102 | 100% | 16,818 | 100% | 17,082 | 100% |

| MALE | October 2017 | | November 2017 | | December 2017 | | Quarterly Average | Quarterly % |
|-------------------|---------------|-------------|---------------|-------------|---------------|-------------|-------------------|-------------|
| | Race | Population | % | Population | % | Population | | |
| Hispanic | 7,844 | 52% | 7,721 | 52% | 7,535 | 52% | 7,700 | 52% |
| Black | 4,409 | 29% | 4,342 | 29% | 4,333 | 30% | 4,361 | 30% |
| White | 2,159 | 14% | 2,153 | 15% | 2,089 | 14% | 2,134 | 14% |
| All Others | 495 | 3% | 510 | 3% | 512 | 4% | 505 | 3% |
| Chinese | 22 | 0% | 24 | 0% | 27 | 0% | 24 | 0% |
| Filipino | 17 | 0% | 17 | 0% | 14 | 0% | 16 | 0% |
| Pacific Islanders | 13 | 0% | 12 | 0% | 17 | 0% | 14 | 0% |
| Japanese | 3 | 0% | 2 | 0% | 3 | 0% | 3 | 0% |
| American Indian | 6 | 0% | 5 | 0% | 4 | 0% | 5 | 0% |
| Total | 14,969 | 100% | 14,784 | 100% | 14,532 | 100% | 14,762 | 100% |

| FEMALE | October 2017 | | November 2017 | | December 2017 | | Quarterly Average | Quarterly % |
|-------------------|--------------|-------------|---------------|-------------|---------------|-------------|-------------------|-------------|
| | Race | Population | % | Population | % | Population | | |
| Hispanic | 1,005 | 43% | 997 | 43% | 983 | 43% | 995 | 43% |
| Black | 721 | 31% | 727 | 31% | 708 | 31% | 718 | 31% |
| White | 511 | 22% | 479 | 21% | 483 | 21% | 491 | 21% |
| All Others | 98 | 4% | 100 | 4% | 99 | 4% | 99 | 4% |
| Chinese | 6 | 0% | 5 | 0% | 5 | 0% | 5 | 0% |
| Filipino | 12 | 1% | 8 | 0% | 6 | 0% | 9 | 0% |
| Pacific Islanders | 1 | 0% | 2 | 0% | 3 | 0% | 2 | 0% |
| Japanese | 2 | 0% | 0 | 0% | - | 0% | 1 | 0% |
| American Indian | - | 0% | - | 0% | 0 | 0% | 0 | 0% |
| Total | 2,355 | 100% | 2,318 | 100% | 2,286 | 100% | 2,320 | 100% |

*Statistical data are averages gathered from *Custody Division Daily Briefing Report*.

INMATE POPULATION OFFENDER AGE GROUPS

The 26-34 year old cohort was the most frequently represented age group within the jail population this quarter, followed by the 18-25 year old cohort.

| COMBINED | October 2017 | | November 2017 | | December 2017 | | Quarterly Average | Quarterly % |
|--------------|---------------|-------------|---------------|-------------|---------------|-------------|-------------------|-------------|
| | Age Group | Population | % | Population | % | Population | | |
| 18 to 25 | 4,340 | 25% | 4,215 | 25% | 4,119 | 24% | 4,224 | 25% |
| 26 to 34 | 5,661 | 33% | 5,625 | 33% | 5,591 | 33% | 5,626 | 33% |
| 35 to 39 | 2,379 | 14% | 2,385 | 14% | 2,328 | 14% | 2,364 | 14% |
| 40 to 44 | 1,524 | 9% | 1,540 | 9% | 1,503 | 9% | 1,522 | 9% |
| 45 & Older | 3,421 | 20% | 3,338 | 20% | 3,278 | 19% | 3,346 | 20% |
| Total | 17,324 | 100% | 17,102 | 100% | 16,818 | 100% | 17,082 | 100% |

| MALE | October 2017 | | November 2017 | | December 2017 | | Quarterly Average | Quarterly % |
|--------------|---------------|-------------|---------------|-------------|---------------|-------------|-------------------|-------------|
| | Age Group | Population | % | Population | % | Population | | |
| 18 to 25 | 3,792 | 25% | 3,666 | 25% | 3,591 | 25% | 3,683 | 25% |
| 26 to 34 | 4,840 | 32% | 4,791 | 32% | 4,751 | 33% | 4,794 | 32% |
| 35 to 39 | 2,043 | 14% | 2,076 | 14% | 2,021 | 14% | 2,047 | 14% |
| 40 to 44 | 1,308 | 9% | 1,339 | 9% | 1,311 | 9% | 1,319 | 9% |
| 45 & Older | 2,985 | 20% | 2,913 | 20% | 2,860 | 20% | 2,920 | 20% |
| Total | 14,969 | 100% | 14,784 | 100% | 14,532 | 100% | 14,762 | 100% |

| FEMALE | October 2017 | | November 2017 | | December 2017 | | Quarterly Average | Quarterly % |
|--------------|--------------|-------------|---------------|-------------|---------------|-------------|-------------------|-------------|
| | Age Group | Population | % | Population | % | Population | | |
| 18 to 25 | 548 | 23% | 549 | 24% | 528 | 23% | 542 | 23% |
| 26 to 34 | 821 | 35% | 834 | 36% | 841 | 37% | 832 | 36% |
| 35 to 39 | 335 | 14% | 309 | 13% | 308 | 13% | 317 | 14% |
| 40 to 44 | 215 | 9% | 201 | 9% | 192 | 8% | 203 | 9% |
| 45 & Older | 435 | 18% | 425 | 18% | 418 | 18% | 426 | 18% |
| Total | 2,355 | 100% | 2,318 | 100% | 2,286 | 100% | 2,320 | 100% |

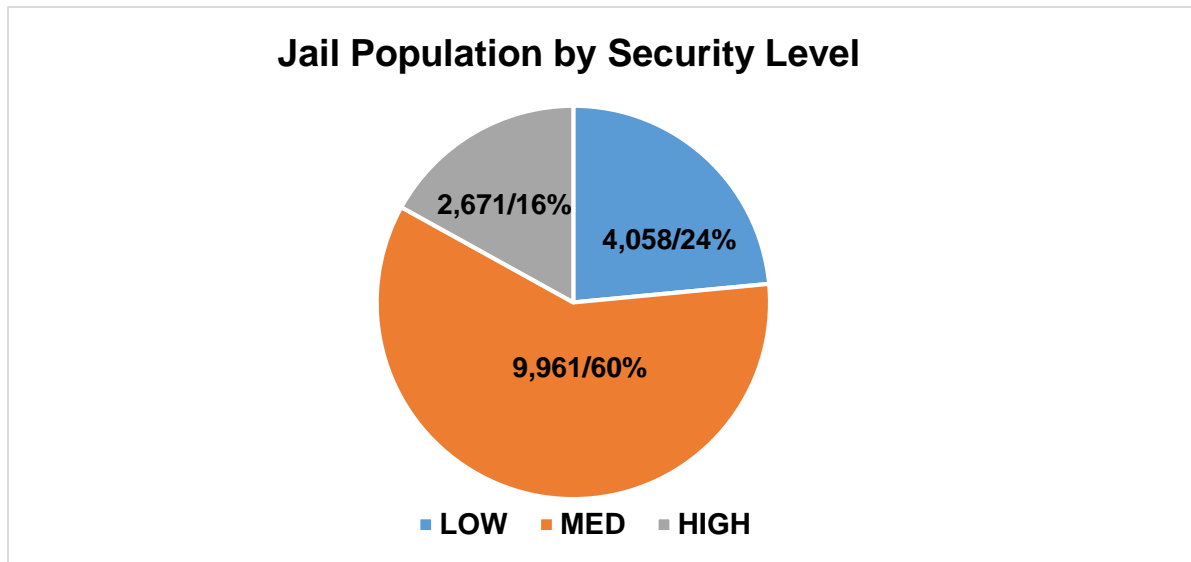
*Statistical data are averages gathered from *Custody Division Daily Briefing Report*.

CLASSIFICATION AND RE-CLASSIFICATION

LASD utilizes the Northpointe Classification system to assign security levels to inmates. The security levels guide where an inmate will be housed based on their individual risk for in-custody misconduct. Lower security housing areas offer more programming and privileges to better prepare the inmates for release. Higher security housing is more restricted and therefore limited in what programs are offered, due to potential risk of serious misconduct and/or escape by the high security level inmate population.

| *Security Level Housing by Facility | | | | |
|-------------------------------------|--------------|--------------|--------------|---------------|
| Month | Low | Medium | High | Total |
| October | 4,144 | 10,060 | 2,710 | 16,914 |
| November | 4,084 | 9,916 | 2,717 | 16,717 |
| December | 3,945 | 9,908 | 2,587 | 16,440 |
| Average | 4,058 | 9,961 | 2,671 | 16,690 |
| Percent | 24% | 60% | 16% | 100% |

*K-10 (Ad-Seg) inmates are re-evaluated for reclassification of security level during the re-class process which occurs every 45 days.
 This chart only includes inmates housed in LASD Type II facilities. Does not include inmates housed in alternative custody beds.



Re-Classification Statistics

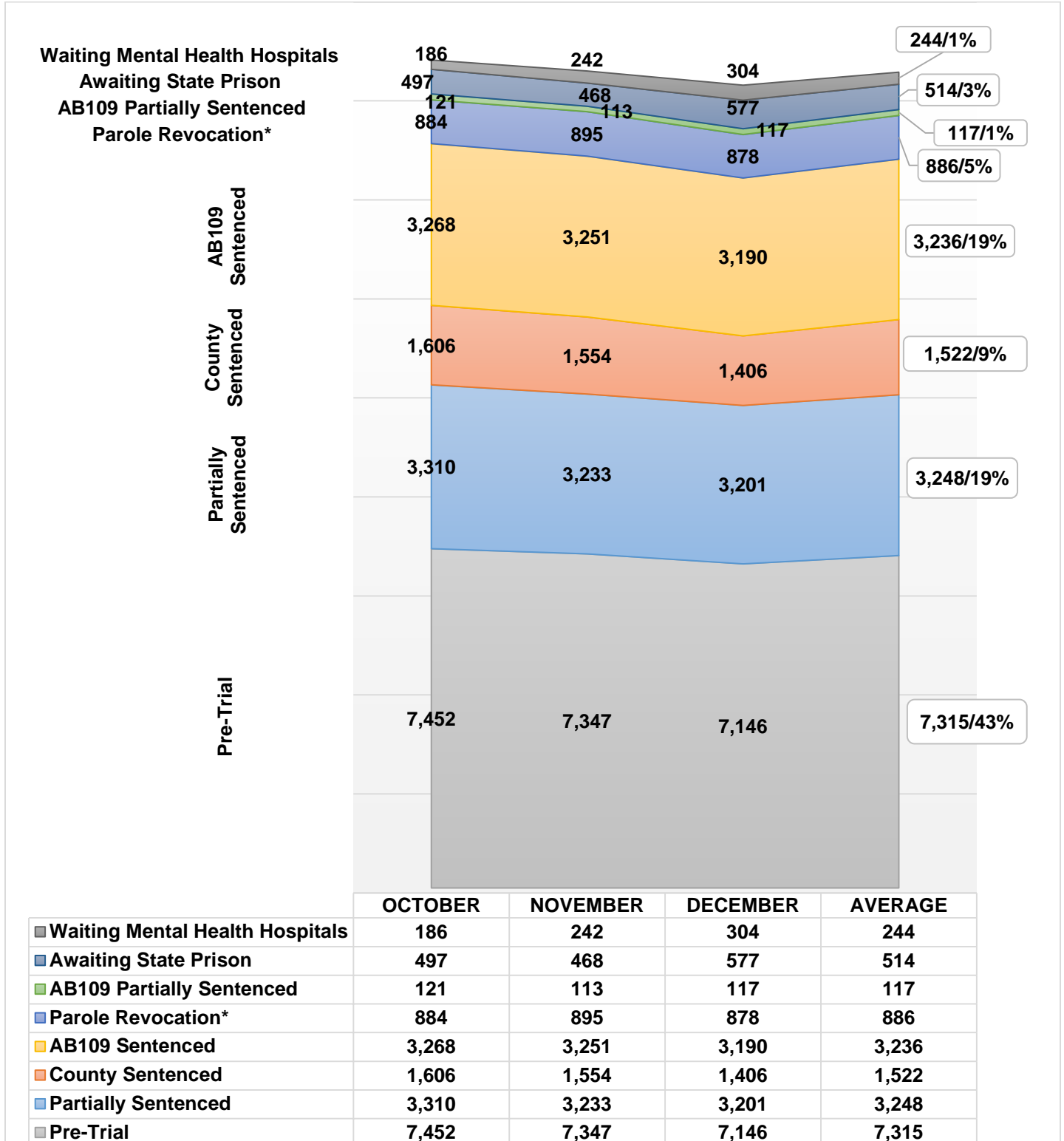
Inmates are periodically reclassified (approximately every 45 days) to determine if their security level is still appropriate or should be reduced or increased based upon their conduct.

| | ADIP | Disciplinary | Inmate Request | Legal Status | Other | Periodic | Sentence | Staff | TOTALS | % of ADIP |
|-----------------|--------|--------------|----------------|--------------|-------|----------|----------|-------|--------|-----------|
| OCTOBER | 17,344 | 890 | 1 | 10 | 2 | 5,579 | 600 | 49 | 7,131 | 41% |
| NOVEMBER | 17,092 | 781 | 0 | 13 | 2 | 5,418 | 897 | 38 | 7,149 | 42% |
| DECEMBER | 16,820 | 835 | 0 | 25 | 6 | 4,838 | 945 | 45 | 6,694 | 40% |
| Total | | 2,506 | 1 | 48 | 10 | 15,835 | 2,442 | 132 | 20,974 | |
| Average | | 835 | 0 | 16 | 3 | 5,278 | 814 | 44 | 6,991 | |

* The periodic assessment increased during the quarter due to an increase in personnel to conduct the assessments timely.

Inmate Population Breakdown

The inmate population consists of various categories of inmates in broad groupings, including: pre-trial, traditional county sentenced, AB 109 sentenced, AB109 sentenced with additional charges, parole/revocation violators, and those awaiting transfer to State Prison.



Parole Revocation includes PRCS Revocation 3455, Flash Incarceration 3454 and Inmates with a 3056 hold.

INMATE POPULATION BREAKDOWN CONTINUED

- **AWAITING STATE PRISON**

- During this quarter, an average of 514 inmates were awaiting transfer to state prison, some while pending trial on other cases.

- **AB109 PAROLE AND PROBATION VIOLATORS**

- An average of 886 AB109 inmates were in custody for violating their parole or probation.

- **AB109 SENTENCED**

- An average of 3,236 inmates were in custody, sentenced under AB109.

- **TRADITIONAL COUNTY SENTENCED INMATE POPULATION**

- The average daily count for the traditional county sentenced (TCS) population was 1,522 approximately 9% of the inmate population.

- **PRE-TRIAL INMATE POPULATION**

- During this quarter, there were approximately 26,084 new bookings into the LA County Jail. Forty-three percent (43%) of the average daily inmate population (17,085) was comprised of inmates who were pre-trial. Pre-trial inmates are those who have an open case and have not been sentenced by the courts.

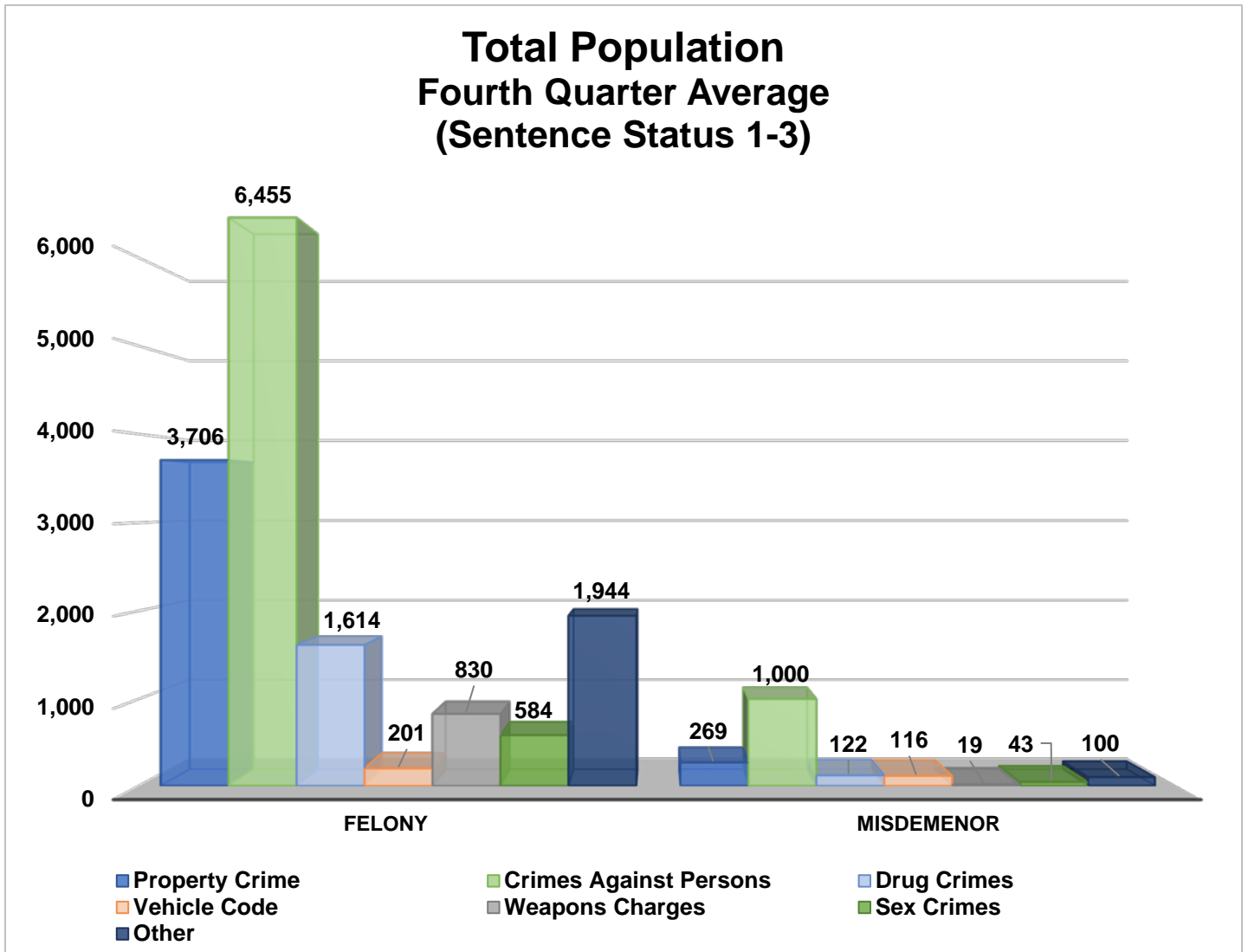
CRIME CLASSIFICATION STATISTICS

The chart below provides an average breakdown for the entire inmate population, both sentenced and un-sentenced, by arrest category.

Population (Sentence Status 1-3)

| Arrest Category | Property Crime | Crimes Against Persons | Drug Crimes | Vehicle Code | Weapons Charges | Sex Crimes | Other | Total | Percentage of the Population |
|-----------------|----------------|------------------------|--------------|--------------|-----------------|------------|--------------|---------------|------------------------------|
| Felony | 3,706 | 6,455 | 1,614 | 201 | 830 | 584 | 1,944 | 15,334 | 90% |
| Misdemeanor | 269 | 1,000 | 122 | 116 | 19 | 43 | 100 | 1,669 | 10% |
| Total | 3,975 | 7,455 | 1,736 | 317 | 849 | 627 | 2,044 | 17,003 | 100% |

**Information contained is based on a snapshot of the daily inmate population purge every Tuesday.*



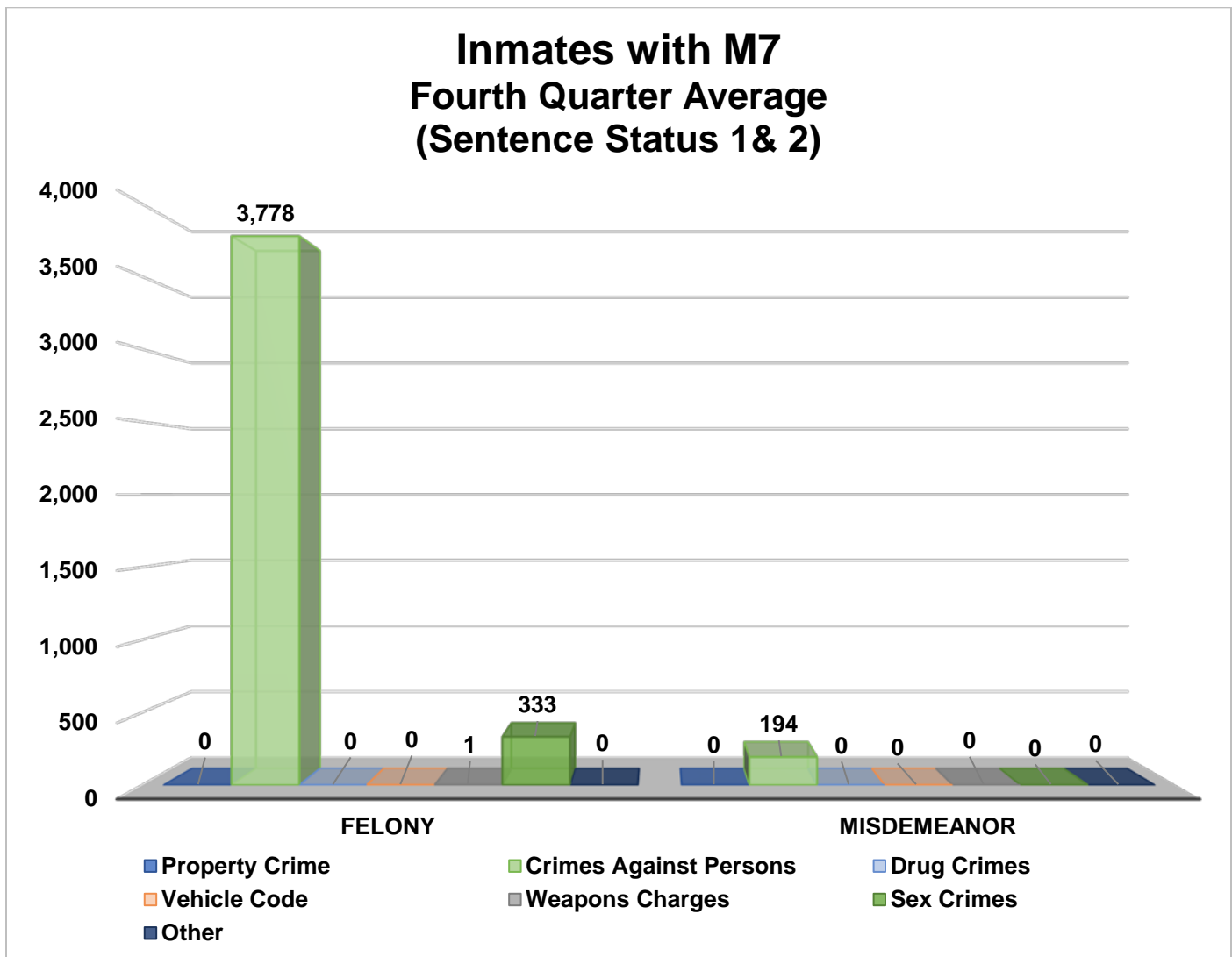
INMATES WITH ASSAULTIVE/VIOLENT CHARGES (M7)

The chart below provides a breakdown for the inmate population with M7 charges, sentence status one and two, by arrest category.

Inmates with Assaultive/Violent Charges (M7) (Sentence Status 1 & 2)

| Arrest Category | Property Crime | Crimes Against Persons | Drug Crimes | Vehicle Code | Weapons Charges | Sex Crimes | Other | Total | Percentage of the pre-trial and partially sentenced population |
|-----------------|----------------|------------------------|-------------|--------------|-----------------|------------|----------|--------------|--|
| Felony | 0 | 3,778 | 0 | 0 | 1 | 333 | 0 | 4,112 | 95% |
| Misdemeanor | 0 | 194 | 0 | 0 | 0 | 0 | 0 | 194 | 5% |
| Total | 0 | 3,972 | 0 | 0 | 1 | 333 | 0 | 4,306 | 100% |

* Information contained is based on a snapshot of the daily inmate population purge every Tuesday.

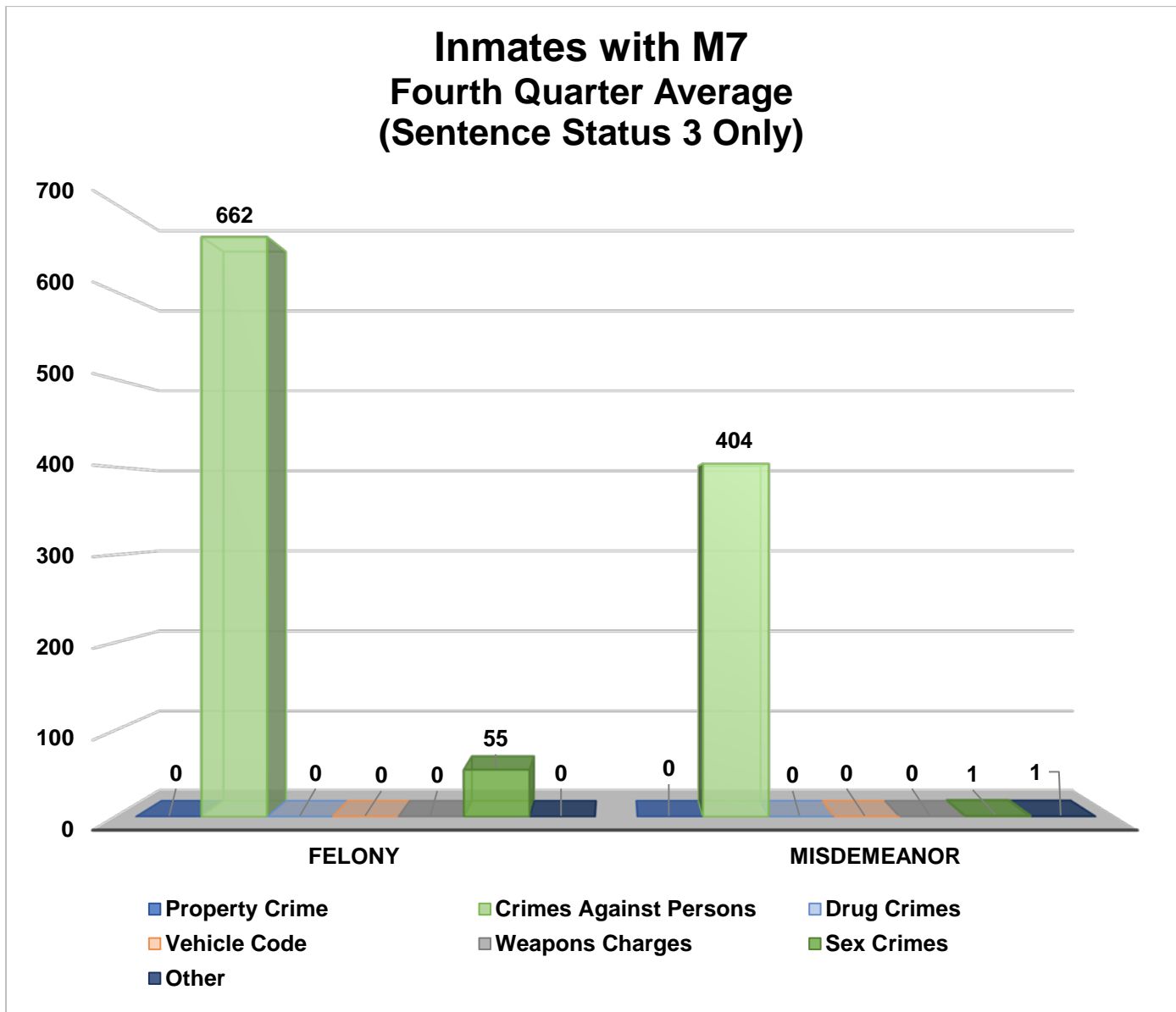


INMATES WITH ASSAULTIVE/VIOLENT CHARGES (M7) CONTINUES

Inmates with Assaultive/Violent Charges (M7) (Sentence Status 3 Only)

| Arrest Category | Property Crime | Crimes Against Persons | Drug Crimes | Vehicle Code | Weapons Charges | Sex Crimes | Other | Total | Percentage of the sentenced population |
|--------------------|----------------|------------------------|-------------|--------------|-----------------|------------|-------|-------|--|
| Felony | 0 | 662 | 0 | 0 | 0 | 55 | 0 | 717 | 64% |
| Misdemeanor | 0 | 404 | 0 | 0 | 0 | 1 | 1 | 406 | 36% |
| Total | 0 | 1,066 | 0 | 0 | 0 | 56 | 1 | 1,123 | 100% |

* Information contained is based on a snapshot of the daily inmate population purge every Tuesday.



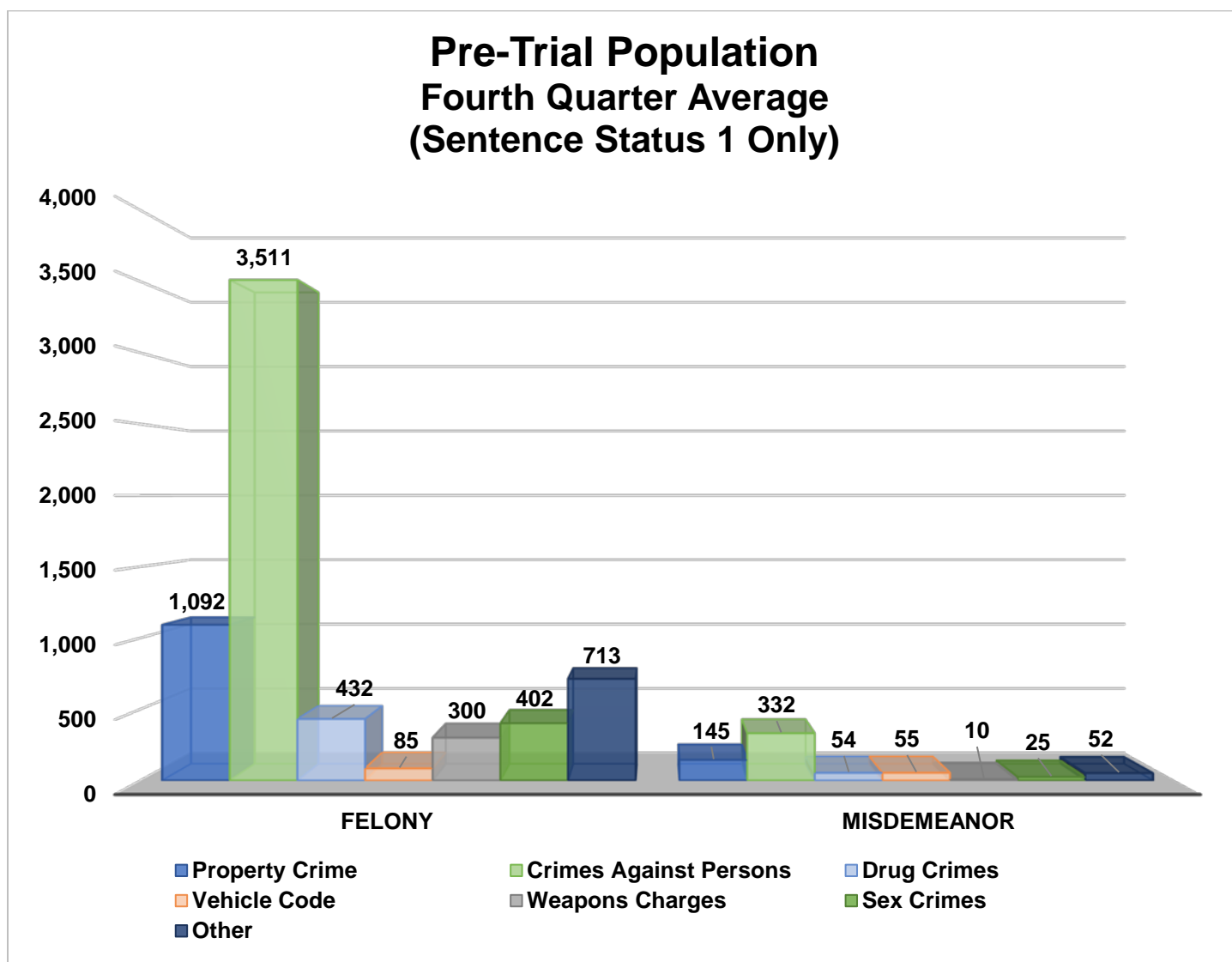
PRE – TRIAL POPULATION

The chart below provides a breakdown for the pre-trial inmate population who are awaiting court disposition.

Pre-trial Population (Sentence Status 1 only)

| Arrest Category | Property Crime | Crimes Against Persons | Drug Crimes | Vehicle Code | Weapons Charges | Sex Crimes | Other | Total | Percentage of the pre-trial population |
|--------------------|----------------|------------------------|-------------|--------------|-----------------|------------|-------|-------|--|
| Felony | 1,092 | 3,511 | 432 | 85 | 300 | 402 | 713 | 6,535 | 91% |
| Misdemeanor | 145 | 332 | 54 | 55 | 10 | 25 | 52 | 673 | 9% |
| Total | 1,237 | 3,843 | 486 | 140 | 310 | 427 | 765 | 7,208 | 100% |

* Information contained is based on a snapshot of the daily inmate population purge every Tuesday.



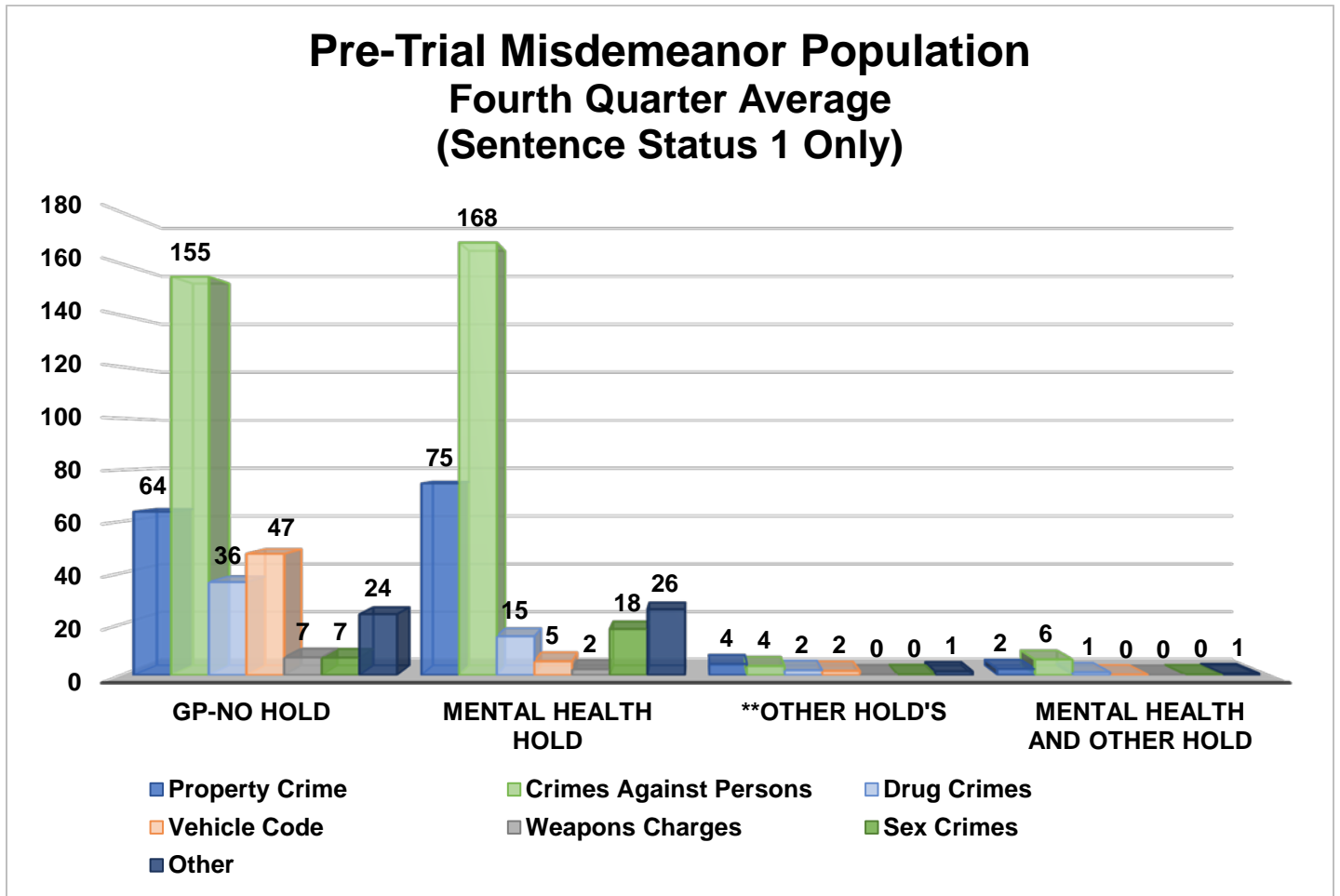
PRE – TRIAL MISDEMEANOR POPULATION

The chart below provides a breakdown for the pre-trial inmate population, incarcerated for a misdemeanor, who have not yet been convicted. “Holds” indicates the inmates are being held on a matter pending from an outside agency.

Pre-trial Misdemeanor Population (Sentence Status 1 only)

| Arrest Category | Property Crime | Crimes Against Persons | Drug Crimes | Vehicle Code | Weapons Charges | Sex Crimes | Other | Total | Percentage of the pre-trial Population |
|--------------------------------|----------------|------------------------|-------------|--------------|-----------------|------------|-----------|------------|--|
| GP No Hold | 64 | 155 | 36 | 47 | 7 | 7 | 24 | 340 | 50% |
| Special Handle M with No Holds | 75 | 168 | 15 | 5 | 2 | 18 | 26 | 319 | 46% |
| GP with Holds | 4 | 4 | 2 | 2 | 0 | 0 | 1 | 13 | 2% |
| Special Handle M with Holds | 2 | 6 | 1 | 0 | 0 | 0 | 1 | 10 | 2% |
| Total | 145 | 333 | 54 | 54 | 9 | 25 | 52 | 672 | 100% |

* Information contained is based on a snapshot of the daily inmate population purge every Tuesday.



PRE-TRIAL BAIL HOLDS

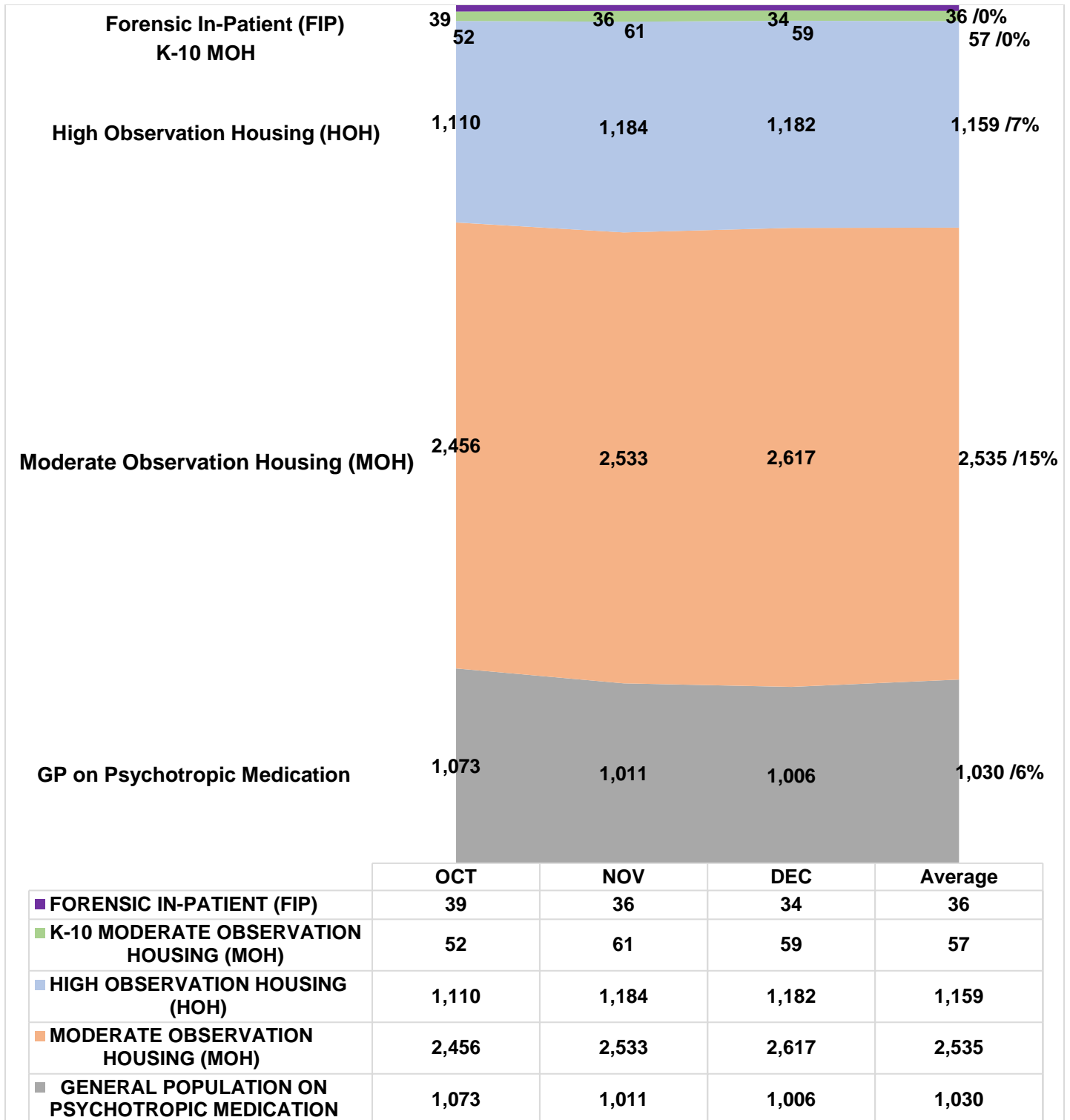
The numbers below represent the average number of inmates in LASD custody eligible for bail with the noted bail amounts.

| Sentence Status 1 | October | | | November | | | December | | | Fourth Quarter Average | | |
|--------------------------------|------------|--------------|--------------|------------|--------------|--------------|------------|--------------|--------------|------------------------|--------------|--------------|
| | With Hold | No Hold | Total | With Hold | No Hold | Total | With Hold | No Hold | Total | With Hold | No Hold | Total |
| \$1 - \$25,000 | 15 | 197 | 212 | 13 | 220 | 233 | 13 | 198 | 211 | 13 | 205 | 219 |
| \$25,001 - \$26,000 | 2 | 34 | 36 | 2 | 31 | 33 | 4 | 34 | 38 | 3 | 33 | 36 |
| \$26,001 - \$50,000 | 28 | 608 | 636 | 31 | 604 | 635 | 25 | 565 | 590 | 28 | 592 | 620 |
| \$50,001 - \$100,000 | 38 | 849 | 887 | 33 | 812 | 845 | 31 | 778 | 809 | 34 | 813 | 847 |
| \$100,001 - \$500,000 | 73 | 1,387 | 1,460 | 71 | 1,319 | 1,390 | 78 | 1,293 | 1,371 | 74 | 1,333 | 1,407 |
| \$500,001 - \$1 Million | 60 | 1,365 | 1,425 | 54 | 1,405 | 1,459 | 56 | 1,419 | 1,475 | 57 | 1,396 | 1,452 |
| No Bail | 409 | 2,335 | 2,744 | 387 | 2,300 | 2,687 | 377 | 2,216 | 2,593 | 391 | 2,284 | 2,675 |
| Total | 625 | 6,775 | 7,400 | 591 | 6,691 | 7,282 | 584 | 6,503 | 7,087 | 600 | 6,656 | 7,256 |

**This information is derived from a point-in-time snapshot. Limitations with our data systems and limitations in obtaining timely court information may result in inaccuracies.*

MENTAL HEALTH INMATE POPULATION

This quarter the overall inmate population was 17,085; the mental health population accounted for 28 percent of this population. Currently, inmates identified with Mental Health needs requiring specialized housing moderate or high observation housing, account for 22 percent of the overall population. This remaining 6 percent have been treated and continue to receive psychotropic medication while housed in general population.



MISDEMEANOR INCOMPETENT TO STAND TRIAL (MIST)

The Los Angeles County Jail houses inmates who are awaiting trial for misdemeanor charges who have been found to be incompetent to stand trial. This quarter the average number of inmates on MIST is 234.

| Misdemeanor Incompetent to Stand Trial (MIST) | | | | | | | | | |
|---|--------|-------|----------|--------|-------|----------|--------|-------|-------------------|
| October | | | November | | | December | | | Quarterly Average |
| Male | Female | Total | Male | Female | Total | Male | Female | Total | |
| 134 | 88 | 222 | 151 | 85 | 236 | 169 | 76 | 245 | 234 |

AMERICANS WITH DISABILITIES ACT (ADA)

ADA Housing is used to accommodate inmates with mobility limitations and/or physical disabilities. This quarter the average number of inmates requiring ADA is 349 which is slightly higher than last quarter's (319) total.

| Americans With Disabilities Act (ADA) | | | | |
|---------------------------------------|---------|----------|----------|-------------------|
| Housing Area | October | November | December | Quarterly Average |
| Twin Towers Module 232 | 354 | 351 | 342 | 349 |

MEDICAL HOUSING

Medical Outpatient/Specialty Housing (MOSH) is provided to inmates who require a level of medical treatment beyond that of stabilized medication distribution (pill call). The MOSH area in MCJ is also used to house inmates with mobility issues.

| Additional Medical Housing – Not ADA Designated | | | | |
|---|------------|------------|------------|-------------------|
| Housing Area | October | November | December | Quarterly Average |
| Correctional Treatment Center (CTC) | 105 | 110 | 113 | 109 |
| Los Angeles County Medical Center (LCMC) | 20 | 18 | 19 | 19 |
| *MCJ Medical/Clinic | 366 | 352 | 345 | 354 |
| Monthly Total | 491 | 480 | 477 | 482 |

**Includes some ADA housing.*

IN-CUSTODY PROGRAMS

LA COUNTY INMATE IN-CUSTODY PROGRAMS

The Los Angeles County Jail offers several in-custody programs. Programs vary from a number of in-custody work assignments, vocational job training, education, and life skill classes, as well as fire camp training and California Department of California Rehabilitative fire camp placement for AB109 inmates. Various programs award sentenced inmate additional time credits for their participation pursuant to the California Penal Code:

CREDIT EARNINGS

| Program | Penal Code | Credit Earned | Type of Inmate |
|------------------------|------------|----------------------------------|-------------------------|
| Sentenced GT/WT | 4019 PC | Day-for-Day (1:1) | All Sentenced Inmates |
| Conservation | 4019.1 PC | One and one half-for One (1.5:1) | All Sentenced Inmates |
| Fire Camp | 4019.2 PC | Two-for-One (2:1) | AB109 Sentenced Inmates |
| Milestone | 4019.4 PC | Up to 6 weeks per year | AB109 Sentenced Inmates |

CONSERVATION WORK PROGRAM (CWP)

The Conservation Work Program (CWP) requires inmates to complete their adjusted sentence while working in various job classifications, giving them the skills and work discipline necessary to increase their chances of success once released. Effective January 2015, all sentenced offenders, including Traditional County Sentenced (TCS) inmates are eligible to receive credits pursuant to Penal Code Section 4019.1. For this quarter, approximately 2,982 offenders (17% of the population) participated in CWP.

| CONSERVATION WORK PROGRAM (CWP) | | | | |
|--|---------|----------|----------|-------------------|
| Inmate Type | October | November | December | Quarterly Average |
| Inmates Participated In Programs | 3,039 | 3,047 | 2,859 | 2,982 |

FIRE CAMP TRAINING PROGRAM

Fire Camp Training and California Institute for Women (CIW/CSCR) training are aligned under the Conservation Work Program (CWP). This program is the first step of training before an inmate may participate in a State facilitated Fire Camp Program. Offenders who are sentenced under AB109 are eligible to receive credits pursuant to Penal Code 4019.1. The average number of inmates enrolled in the Fire Camp training program for this quarter was 73.

| FIRE CAMP TRAINING CAMP | | | | |
|--------------------------------|----------------|-----------------|-----------------|--------------------------|
| Housing Type | October | November | December | Quarterly Average |
| PDC Fire Camp Training (Men) | 73 | 69 | 70 | 71 |
| CIW Fire Camp Training (Women) | 1 | 3 | 3 | 2 |
| Monthly Totals | 74 | 72 | 73 | 73 |

CALIFORNIA DEPARTMENT OF CORRECTIONS AND REHABILITATION (CDCR) FIRE CAMP PROGRAM

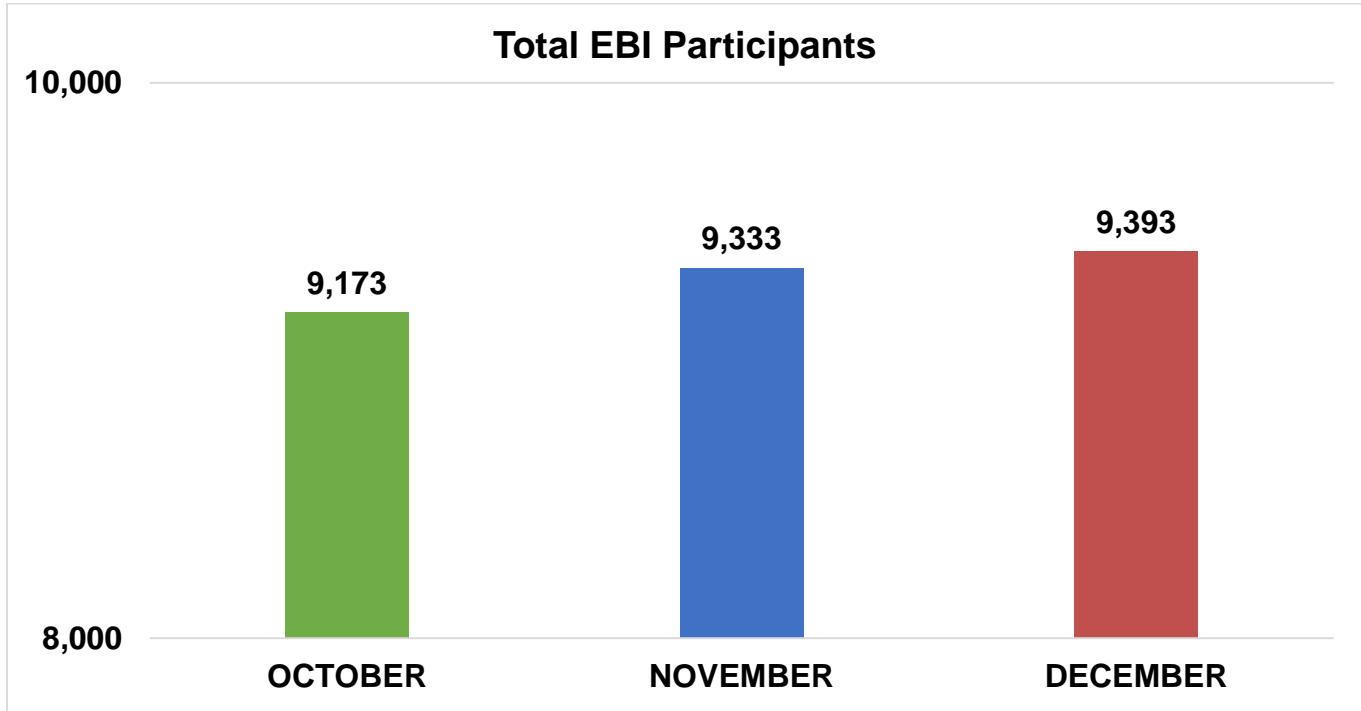
Once an inmate passes all necessary requirements in the Fire Camp Training Program located at PDC East facility, they are transferred to one of five state contracted fire camp sites where they will serve the remainder of their adjusted sentence. Offenders who are sentenced under AB109 are eligible to receive credits pursuant to Penal Code 4019.2. The average number of inmates assigned to CDCR Fire Camps for this quarter was 80.

| CDCR FIRE CAMP | | | | |
|----------------------------|----------------|-----------------|-----------------|--------------------------|
| Fire Camp Locations | October | November | December | Quarterly Average |
| Acton Fire Camp | 15 | 12 | 13 | 13 |
| Francisquito Fire Camp | 9 | 10 | 14 | 11 |
| Holton Fire Camp | 38 | 49 | 33 | 40 |
| Julius Klein Fire Camp | 9 | 11 | 13 | 11 |
| Malibu Women's Fire Camp | 6 | 5 | 5 | 5 |
| Monthly Totals | 77 | 87 | 78 | 80 |

EDUCATION BASED INCARCERATION PROGRAMS (EBI-MILESTONE)

The Education Based Incarceration Program (EBI) uses traditional and nontraditional education which is designed to reduce incarceration by increasing the educational, civic, social, economic, and life skills of its participants. Offenders who are sentenced are eligible to receive credits pursuant to Penal Code 4019.4. For this quarter, approximately averaged 9,300 (54% of the population) inmates participated in the EBI program.

A total of 731 Milestone credits were awarded this quarter.



| Education Based Incarceration Program (EBI) | | | | |
|---|---------|----------|----------|-------------------|
| Inmate Type | October | November | December | Quarterly Average |
| *Inmates Participated in EBI | 9,173 | 9,333 | 9,393 | 9,300 |
| *Sub Population of EBI Participants | | | | |
| EBI Participant Type | October | November | December | Quarterly Average |
| GP on Psych Meds | 929 | 902 | 948 | 926 |
| Mentally III (M) | 1,674 | 2,257 | 2,673 | 2,201 |
| ^Pre-Trial Non – AB109 | 2,499 | 3,255 | 4,416 | 3,390 |
| Post Trial Non – AB109 | 4,606 | 4,012 | 3,085 | 3,901 |
| ^Pre-Trial – AB109 | 36 | 49 | 57 | 47 |
| Post Trial – AB109 | 2,007 | 1,993 | 1,812 | 1,937 |
| ^Unsentenced Status 1 and 2 | 25 | 24 | 23 | 24 |

**Data derived from ATAR system, sub-population numbers will differ from monthly total due to duplicate classifications.*

^NON-CREDIT EARNING CATEGORIES OF PARTICIPANTS IN EBI (IN EBI DORM WORKING YET NOT EARNING CREDIT DUE TO SENTENCE STATUS).

BACK ON TRACK PROGRAM

The Back on Track (BOT) program began in February 2015 and is overseen by EBI staff. The program delivers education and comprehensive reentry services to offenders before and after a participant is released from jail. The program focuses on the critical time following an inmate's release from jail, by providing the seamless reentry services vital for success, including employment and life skill services. This program is available to inmates who have been sentenced under AB109 and are eligible to receive Milestone credits. They must be enrolled in the program for 18 months—divided into 9 months in-custody and 9 months out-of-custody.

| Back On Track | October | November | December | Quarterly Average |
|----------------------|----------------|-----------------|-----------------|--------------------------|
| South Barrack | 65 | 59 | 57 | 60 |

In-Custody S.T.A.R.T

The jail based START treatment services began at CRDF in February 2016 providing substance use disorder (SUD) treatment services to 50 women on any given day. In May of 2017, the program expanded to treat up to 124 women. In May 2017 services began at MCJ for up to 90 gay and transgender inmates and at PDC South facility treating up to 200 men in general population on any given day. Treatment services include screening, clinical assessment, group and individual counseling, case management services, medication assisted treatment, re-entry planning and care coordination with CTU and transportation to community based services post release.

| In-Custody S.T.A.R.T (CRDF) | October | November | December | Quarterly Average |
|------------------------------------|----------------|-----------------|-----------------|--------------------------|
| Enrolled | 130 | 108 | 123 | 120 |
| Completed | 33 | 37 | 48 | 39 |

| In-Custody S.T.A.R.T (MCJ) | October | November | December | Quarterly Average |
|-----------------------------------|----------------|-----------------|-----------------|--------------------------|
| Enrolled | 34 | 42 | 58 | 45 |
| Completed | 2 | 5 | 12 | 6 |

| In-Custody S.T.A.R.T (PDC) | October | November | December | Quarterly Average |
|-----------------------------------|----------------|-----------------|-----------------|--------------------------|
| Enrolled | 111 | 137 | 101 | 116 |
| Completed | 36 | 27 | 12 | 25 |

ALTERNATIVES TO CUSTODY PROGRAMS

ALTERNATIVES TO CUSTODY PROGRAMS

The Community Transition Unit (CTU), the Community Based Alternatives to Custody Unit (CBAC), and the Compliance Team work together by utilizing a variety of alternatives to custody programming options in an effort to enhance an inmate's chance of success upon release. These programs are conducted in collaboration with local agencies including Community and Faith Based Organizations, Department of Mental Health (DMH), Department of Public Health (DPH), and other organizations. It is the Department's goal to program inmates from intake through re-entry into the community. With this approach, we hope to increase public safety and reduce the rate of recidivism.

Supported by release planning overseen by the CTU, and in partnership with contracted services, inmates are provided re-entry assistance through linkages to services that are initiated while they are in-custody and continue upon release. Through the Alternatives to Custody (ATC) programs, qualifying inmates are afforded the opportunity to complete the remaining portion of their sentence in a community treatment program. Inmates who do not qualify for ATC due to security or other reasons are referred to community providers for re-entry assistance.

The ATC programs include:

Substance Treatment and Reentry Transition (S.T.A.R.T)

The Substance Treatment and Re-entry Transition (START) program is a Department Public Health, Substance Abuse Prevention Control (SAPC) funded program that places eligible male and female inmates into residential substance use disorder (SUD) treatment programs on electronic GPS monitoring as an alternative to custody (ATC) program.

Community Grant Beds

The Community Grant beds are funded through community grants. They work directly with various residential programs approved by LASD, but not affiliated with the START program, and they offer treatment beds for inmates under the ATC program. Several programs cater to specific clientele who fit a specified demographic in regards to age and gender.

Veteran's Administration (VA)

The Veteran's Administration (VA) funds SUD residential treatment, under the ATC program for inmates who are confirmed to be a veteran entitled to VA Benefits. The treatment programs are approved by the VA and are vetted by LASD.

Transitional Case Management Program (TCM)

The Transitional Case Management Program (TCM) is a Department of Public Health (DPH) funded program, whereby DPH employees refer HIV infected inmates to a residential SUD treatment facility, approved and vetted by LASD, under the ATC program.

TARZANA TREATMENT CENTER DMH/SUD PROGRAM

Tarzana Treatment Center, in partnership with LASD, DHS Correctional Health, and the Department of Mental Health, has made available 40 total beds for inmates with a co-occurring mild to moderate mental health diagnosis, and a substance use disorder (SUD). These residential SUD beds are for female. Inmates are identified by DHS Jail Linkage staff and referred to Tarzana treatment for assessment and acceptance. Inmates must still qualify for ATC programming through a validated risk assessment and criminal history review.

MENTAL HEALTH DIVERSION – NORMANDIE VILLAGE/GATEWAY

Normandie Village treats eligible male N3 inmates with mental illness who are a low security risk, and in a stabilized condition. They are selected to complete the remaining 60-180 days of their sentence in a 42 bed community-based IMD Step-down facility.

For acceptance into program, inmates must volunteer to participate in services and meet the following criteria:

1. Be 18-54 years of age
2. Must have a primary Axis I major psychiatric diagnosis
3. May have a secondary Axis I diagnosis of substance abuse
4. Must not be a registered sex offender
5. Must not have a fire setting history
6. Must be ambulatory
7. Must not have a serious or life-threatening medical problem
8. Must not require treatment in a locked setting
9. Must have applied for SSI

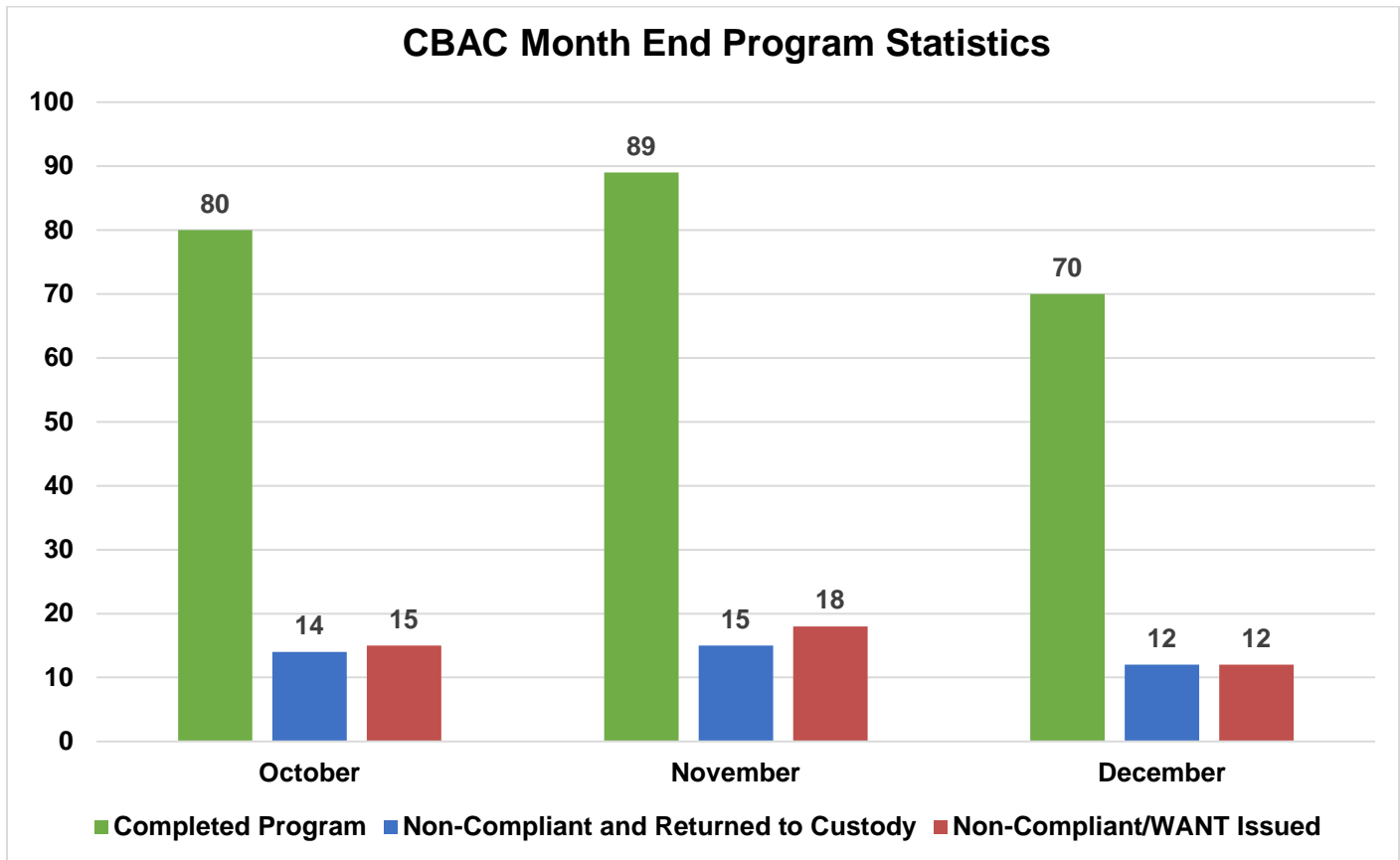
| Program Quarterly Statistics | Enrolled | Completed | Returned to Custody | Absconded |
|-------------------------------------|-----------------|------------------|----------------------------|------------------|
| START | 36 | 49 | 5 | 1 |
| Community Grant Beds | 1 | 2 | 0 | 0 |
| Veterans | 1 | 0 | 1 | 0 |
| Transitional Case Management | 1 | 0 | 0 | 0 |
| Tarzana TC DMH/SUD | 2 | 1 | 0 | 0 |
| Normandie Village DMH | 4 | 3 | 2 | 1 |

COMMUNITY BASED ALTERNATIVES TO CUSTODY (CBAC)

The PMB's CBAC unit identifies low risk sentenced offenders within the jail population who qualify to finish their remaining sentence in and out-of-custody alternative environment. Although these individuals are outside of traditional custody, they are still under the jurisdiction of the Department.

| CBAC Monthly Placement | | | | | | | | | |
|-------------------------------|------------|-----------|------------|-----------|-----------|-----------|-----------|----------|-----------|
| Program | October | | | November | | | December | | |
| | M | F | Total | M | F | Total | M | F | Total |
| Electronic Monitoring Program | 41 | 4 | 45 | 27 | 9 | 36 | 29 | 6 | 35 |
| Weekender Work Program | 32 | 0 | 32 | 14 | 0 | 14 | 18 | 0 | 18 |
| Work Release Program | 37 | 8 | 45 | 33 | 7 | 40 | 38 | 3 | 41 |
| Monthly Totals | 110 | 12 | 122 | 74 | 16 | 90 | 85 | 9 | 94 |

The graph below depicts the total number of offenders who successfully completed the remainder of their sentence on a CBAC program. It also shows the number of offenders who failed to complete the program and with the efforts of the PMB Compliance Unit, were returned back to finish their sentence and those who failed to complete the program and were not returned back to custody.



RE - ENTRY ASSISTANCE

AFFORDABLE CARE ACT (ACA)

Medi-Cal application assistance is offered to inmates at each jail facility and those inmates on the Work Release Program (WRP), home EMP, community treatment ATC and station workers. The following chart represents enrollment statistics for the fourth quarter of 2017:

| | October | November | December | Totals | Average | Prev. Quarter Totals | % Difference |
|--------------------------------|---------|----------|----------|--------|---------|----------------------|--------------|
| Direct inmate contact/In-Reach | 707 | 628 | 662 | 1,997 | 666 | 2,199 | -9% |
| Applications cleared by DPSS | 104 | 83 | 47 | 234 | 78 | 416 | -44% |
| Applications in queue | 109 | 118 | 217 | 444 | 148 | 721 | -38% |
| Applications approved by DPSS | 104 | 83 | 47 | 234 | 78 | 416 | -44% |
| Benefits received | 104 | 83 | 47 | 234 | 78 | 416 | -44% |
| Benefits denied | 27 | 17 | 17 | 61 | 20 | 200 | -69% |

DPSS' YOUR BENEFITS NOW SYSTEM IN THE PREVIOUS QUARTER WAS NOT CAPTURING THE DATA NEEDED FOR THESE STATS DUE TO A NEWLY IMPLEMENTED SYSTEM (LRS). THE SYSTEM IS WORKING NOW BUT THE PREVIOUS QUARTER'S TOTALS WEREN'T AVAILABLE TO DO A COMPARISON FOR THIS REPORT.

COMMUNITY RE-ENTRY AND RESOURCE CENTER (CRRC)

The information below are recently released inmates and inquiries and/or contacts made by members of the general public who have been assisted with services at the CRRC for the fourth quarter of 2017.

| Inquiry Demographic Population | October | November | December | Total | Average |
|--------------------------------|------------|------------|------------|--------------|------------|
| General Release | 354 | 345 | 345 | 1,044 | 348 |
| General Public | 144 | 127 | 126 | 397 | 132 |
| Alternative to Custody Program | 2 | 4 | 2 | 8 | 3 |
| Coordinated Release | 7 | 4 | 16 | 27 | 9 |
| Work Release | 21 | 17 | 7 | 45 | 15 |
| Phone Referral | 4 | 2 | 1 | 7 | 2 |
| Monthly Totals: | 532 | 499 | 497 | 1,528 | 509 |

| Inquiry Demographic Gender | October | November | December | Total | Average |
|----------------------------|------------|------------|------------|--------------|------------|
| Male | 441 | 429 | 415 | 1,285 | 428 |
| Female | 113 | 97 | 100 | 310 | 103 |
| Monthly Totals: | 554 | 526 | 515 | 1,595 | 531 |

CTU personnel visit the Inmate Reception Center release area to educate and remind inmates waiting to go home about services available at the CRRC. Walks of the release area are performed every 90 minutes.

| | October | November | December | Total | Average |
|--|---------|----------|----------|-------|---------|
| Number of 90 Minute Contact Walks | 45 | 62 | 45 | 152 | 51 |
| Number of Inmates Contacted | 1,436 | 1,587 | 1,265 | 4,288 | 1,429 |
| Number of Flyers Distributed | 995 | 1,037 | 1,189 | 3,221 | 1,074 |

CTU COORDINATED RELEASES TO VARIOUS PROGRAMS

The final 90 days leading to an inmate's release from custody are the most critical in ensuring a successful transition from Custody to Community Based Organization (CBO) Treatment Centers. During the time leading up to their release, inmates are interviewed several times by the CBO Staff and members of the Community Transition Unit to ensure that they are matched up with a suitable treatment provider.

The coordinated release process helps to create a trust between law enforcement, inmate participants, and CBO's. The CTU's ultimate goal is to provide a successful recovery and re-entry into the community and to ultimately decrease recidivism.

| | October | November | December | Total | Average |
|---------------------|---------|----------|----------|-------|---------|
| Coordinated Release | 119 | 88 | 87 | 294 | 98 |

CTU VITAL RECORDS

Through the Vital Records Program, LASD staff members have been deputized by the County Registrar-Recorder to facilitate birth certificate applications for inmates born in Los Angeles County, who have requested a certified copy. The fee of \$28 for certified copies of birth certificates is funded by the Inmate Welfare Fund.

All inmates in custody are eligible to apply for a California ID Card. The issued ID's are provided to the inmates upon their release. The inmates must still report to the DMV to obtain a driver license following their release.

| Records Processed | October | November | December | Quarterly Total | Average |
|--------------------------------------|------------|------------|------------|-----------------|------------|
| DMV - California Identification Card | 104 | 131 | 120 | 355 | 118 |
| RECORDS – Birth Certificate | 103 | 167 | 140 | 410 | 137 |
| Totals | 207 | 298 | 260 | 765 | 255 |

| Records Issued | October | November | December | Quarterly Total | Average |
|--------------------------------------|------------|------------|------------|-----------------|------------|
| DMV - California Identification Card | 140 | 41 | 52 | 233 | 78 |
| RECORDS – Birth Certificate | 191 | 112 | 160 | 463 | 154 |
| Totals | 331 | 153 | 212 | 696 | 232 |